

Organised by



**HKU Med**

LKS Faculty of Medicine  
School of Nursing  
香港大學護理學院



**HKU Nursing**  
Vision to Lead • Mission to Serve



**ASIA REGION**



# Hong Kong International Nursing Forum *cum* 3<sup>rd</sup> Sigma Asia Region Conference

Nursing's Evolving Roles in Transforming Global Health:  
Challenges and Opportunities

December 7 - 8, 2020



**Programme Book**

Co-organisers



# Contents

<b>Introduction and Organising Committee</b>	1
<b>Co-organisers</b>	2
<b>Welcome Messages</b>	4
<b>Congratulatory Message from Guest of Honour</b>	8
<b>Virtual Exhibition Hall</b>	9
<b>Programme at a Glance</b>	10
<b>Grace Tien Lecture</b>	12
<b>Serena Yang Lecture</b>	13
<b>HKU School of Nursing 25<sup>th</sup> Anniversary Lecture</b>	14
<b>Sigma Theta Tau Asia Region Symposium</b>	16
<b>Invited Symposium: Community and Mental Health Nursing</b>	21
<b>Invited Symposium: Smoking Cessation and Tobacco Control</b>	24
<b>Invited Symposium: Gerontology and Long Term Care</b>	28
<b>Invited Symposium: Cancer and Palliative Care</b>	36
<b>Poster Presentations</b>	39
<b>Acknowledgements</b>	63

# Introduction

The 10<sup>th</sup> Hong Kong International Nursing Forum *cum* 3<sup>rd</sup> Sigma Asia Region Conference, jointly organised by the School of Nursing of The University of Hong Kong and the Sigma Theta Tau International (STTI) Asia Region, aims to bring together international and local leading authorities in nursing research, nursing education and clinical practice, to present and discuss their insights on the latest developments and transformation in the role of nurses.

The Forum includes The Grace Tien Lecture, The Serena Yang Lecture and The HKU School of Nursing 25<sup>th</sup> Anniversary Lecture. We have invited worldwide distinguished healthcare leaders and professionals to be our keynote speakers. The Forum, with the theme “**Nursing’s Evolving Roles in Transforming Global Health: Challenges and Opportunities**”, aims to foster the exchange of innovative ideas in nursing development by providing a platform for local and overseas scholars, scientists, clinicians, and policy makers; to share ideas, experiences, research, and clinical practice, to present and discuss their insights on the transforming roles of nurses.

## Organising Committee

<b>Co-Chairpersons</b>	Dr Janet Wong	Dr Patsy Chau
<b>Advisor</b>	Prof Chia-Chin Lin	

### Scientific Sub-committee

<b>Co-Chairpersons</b>	Prof Doris Yu	Dr Daniel Fong	
<b>Members</b>	Dr Patsy Chau Dr Edmond Choi Dr Agnes Lai Dr William Li Dr Kelvin Wang	Dr Denise Cheung Dr Mandy Ho Dr Stanley Lam Dr Kris Lok Dr Janet Wong	Dr Derek Cheung Dr Jojo Kwok Dr Jay Lee Dr Alina Ng

### Promotion and Sponsorship Sub-committee

<b>Co-Chairpersons</b>	Dr William Li	Ms Yuk-Sim Chan (Until November 2020)	Dr Polly Chan
<b>Members</b>	Dr Cecilia Kong Ms Rebecca Poon Ms Alice Wong	Dr William Lam Ms Mary See	Ms Zoe Ng Ms Vivien Tsang

### Programme Sub-committee

<b>Co-Chairpersons</b>	Dr Edmond Choi	Ms Claudia Chan
<b>Members</b>	Dr Angie Lam	Dr Grace Yuen

## Co-organisers



School of Nursing  
Army Medical University



School of Nursing  
Centro Escolar University



Chenla University



Faculty of Nursing  
Chiang Mai University



Graduate School of Nursing  
Chiba University



Faculty of Nursing  
Chulalongkorn University



School of Nursing  
Duke University



College of Nursing  
Ewha Womans University



School of Nursing  
Fujian Medical University



College of Nursing  
Kaohsiung Medical University



Graduate School of Health Sciences  
Kobe University



Faculty of Nursing  
Mahidol University



Nam Dinh University of Nursing



Faculty of Nursing  
National and Kapodistrian  
University of Athens



School of Nursing  
Naval Medical University



School of Health Sciences  
Ngee Ann Polytechnic



School of Nursing  
Queensland University of Technology



Department of Nursing  
Shantou University Medical College



School of Nursing  
Sun Yat-sen University



College of Nursing  
Taipei Medical University



College of Nursing  
The Catholic University of Korea



Division of Nursing, Midwifery and Social Work  
The University of Manchester



Department of Nursing  
The University of Melbourne



Susan Wakil School of Nursing and Midwifery  
The University of Sydney



Faculty of Nursing  
Universitas Indonesia



PAPRSB Institute of Health Sciences  
Universiti Brunei Darussalam



School of Nursing  
University of Birmingham



School of Nursing  
University of British Columbia, Okanagan



Sue & Bill Gross School of Nursing  
University of California, Irvine



Faculty of Nursing Sciences  
University of Health Sciences



College of Nursing  
University of Illinois at Chicago



Department of Nursing Science  
University of Malaya



Nursing Department  
University of Medicine and Pharmacy at Ho Chi Minh City



School of Nursing  
University of Navarra



School of Nursing  
University of North Carolina at Chapel Hill



University of Nursing, Yangon



College of Nursing  
University of the Philippines Manila



The Lawrence S. Bloomberg  
Faculty of Nursing  
University of Toronto



School of Nursing  
Health Science Center  
Xi'an Jiaotong University



College of Nursing  
Yonsei University



School of Nursing  
Zhejiang University

## Welcome Message

On behalf of The University of Hong Kong, it gives me great pleasure to welcome all participants of the 10<sup>th</sup> Hong Kong International Nursing Forum *cum* 3<sup>rd</sup> Sigma Asia Region Conference.

As nations worldwide continue to respond to the pandemic, I take this opportunity to express my heartfelt appreciation to all frontline workers providing essential services, including all of you who are in the healthcare professions. Doctors and nurses, in particular, have demonstrated their leadership and deep commitment to saving lives and protecting their respective communities.

The online format of the Forum this year gives us the scope to reach a wider global audience. With support from over 40 universities and institutes from Mainland China and overseas, we have invited leading academics and practitioners to present the latest findings and developments in nursing education, research and practice.

The focus this year on "Nursing's Evolving Roles" will no doubt generate timely and insightful discussions as the world prepares for and transitions to a post-pandemic reality. Whatever the new normal may be, it is abundantly clear that nurses and other medical professionals will play a critical role in strengthening preparedness for future health challenges that arise not only from emerging infectious diseases, but also complications brought about by global climate change and aging populations.

I would like to offer my warmest congratulations to the organisers of the Forum and my best wishes to everyone for a successful and productive event.



**Professor Xiang Zhang**

President and Vice-Chancellor  
The University of Hong Kong



## Welcome Message

Nothing seems more relevant and timelier than reflecting and exchanging insights on the evolving roles of nursing as the COVID-19 pandemic continues to threaten the health of millions, if not billions, around the world.

Nursing has always been an essential contributor to safeguarding public health. Practitioners and researchers have been working tirelessly over the years to strengthen the role of nursing in patient care, health education and medical treatment. But in view of the unprecedented challenges brought by the lingering pandemic, we are faced with the pressing question of how nursing – indeed, the health care and medical profession at large – can help prevent and respond to global health emergencies like COVID-19 more effectively. It is time to rethink what we do and how it is done. It is time to identify and overcome hurdles that may stand in our way as we gear up for combating future challenges. It is time to push our limits farther and explore untrodden areas of health education and protection for long-term common good.

At HKUMed, breakthroughs in research are often inspired by candid dialogues, detailed observations and deep reflections. None of these would have been possible without our broadening knowledge base and expanding networks. Drawing on the expertise and experience of more than 1,500 professionals and 41 partner institutions around the world, the two-day conference is a perfect opportunity of intellectual exchanges and open discussions for informative and interesting insights on the way forward.

While the pandemic might have set off a rising reliance on technology, as we have seen in delivering this conference and many other remote engagements, people remain the primary focus of our work. Nursing stands firmly at the forefront of educating and interacting with patients, their family and members of the public at large. Any technological pursuit should enable us to strengthen this standing.

I wish you all a fruitful and inspiring conference.



**Professor Gabriel Leung**

Dean of Medicine  
The University of Hong Kong

## Welcome Message

It gives me great pleasure to welcome all of you to the 10<sup>th</sup> Hong Kong International Nursing Forum *cum* 3<sup>rd</sup> Sigma Asia Region Conference, jointly organised virtually by the School of Nursing, HKU and the Sigma Theta Tau International Asia Region. Because of the COVID-19 pandemic, the forum has to be a virtual one and we can't meet and greet each other face-to-face, however we are still connected from afar by the technology with a record high of 41 co-organisers and over 1,500 participants joining us from around the World.

Year 2020, being Florence Nightingale 200<sup>th</sup> Birthday and the International Year of the Nurse and the Midwife, highlights the importance of the contribution of nurses and midwives. The role of the nursing profession has been evolving and transforming, especially during the challenging time of pandemic. We hope that through the presentation of our distinguished speakers along the Forum's theme, "Nursing's Evolving Roles in Transforming Global Health: Challenges and Opportunities", we can all benefit from their insights on the latest developments and transformation in the role of nurses.

This year marks the silver jubilee of the School of Nursing and the 10<sup>th</sup> anniversary of the Hong Kong International Nursing Forum. With the World is facing an unprecedented global health crisis, it's not a time for celebration, but more importantly, it is a time for us as nursing professionals, to reflect on the past and to focus on the future. For the School to excel for the next silver anniversary, there certainly are hurdles to overcome. These obstacles are not exclusive to our School and we embrace them. With challenges come opportunities, the impetus for nursing specialization arisen from scientific and technological advancements and the ever evolving healthcare demands in society causing us to examine and evaluate our clinical practice with an evidence-based approach and focused knowledge and to conduct our research with creativity and cross-disciplinary. I sincerely believe that our School will continue to contribute our efforts in healthcare advancement with commitments and dedication.

I would like to take this opportunity to express my sincere thanks to the University and the Faculty of Medicine for their staunch support in our mission to foster knowledge exchange and advance clinical practice in the nursing discipline and profession. I would also like to thank all keynote speakers and symposia speakers for sharing their expertise and wisdom with us, and all the co-organisers and delegates from all over the world for their participation.

A lot of hard work and dedicated efforts have put into the organisation of this forum. Without a dedicated team, this event would not have been possible. A big thank you goes to the Chairpersons and all the Organising Committee members for their diligence and perseverance. Last but not least, I would like to express our gratitude to the Tien's family for supporting the Grace Tien Lecture and Dr Serena Yang for her kindness and generosity in supporting the Serena Yang Lecture in the Forum.

Finally, I wish this event every success and I hope all of you will find this occasion a rewarding experience. Thank you.



**Professor Chia-Chin Lin**

Alice Ho Miu Ling Nethersole Charity Foundation  
Professor in Nursing  
Head  
School of Nursing  
The University of Hong Kong



## Welcome Message

On behalf of the Organising Committee, we are most delighted to welcome you to the 10<sup>th</sup> Hong Kong International Nursing Forum *cum* 3<sup>rd</sup> Sigma Asia Region Conference, jointly organised by the School of Nursing of The University of Hong Kong and the Sigma Theta Tau International (STTI) Asia Region. It is our honour to co-host this event with the Sigma Theta Tau International Asia Region which promotes nursing excellence in scholarship, leadership, and service, and the renowned universities/institutes around the world.

The Forum this year will focus on "Nursing's Evolving Roles in Transforming Global Health: Challenges and Opportunities". It aims to bring together international and local leading authorities in nursing research, nursing education and clinical practice, to present and discuss their insights on the latest developments and transformation in the role of nurses, in particular, to respond to the emergence of COVID-19. We believe our intellectual exchanges on this theme will be particularly beneficial to academics and global practitioners in nursing practices, education and research during the most challenging time of the globe. Our virtual Forum will build on the contribution of the nurses and healthcare professionals across the entire world.

Our sincere gratitude goes to all distinguished speakers for their insightful presentations, all delegates and guests for their active participations and all sponsors for their enduring supports to the Forum. We would also like to take this opportunity to extend our heartfelt gratitude members of the Organising Committee who dedicated efforts and invaluable input towards this Forum. Wishing you a professionally rewarding time at the virtual Forum!



**Dr Janet Wong**

Co-Chairperson  
10<sup>th</sup> Hong Kong International Nursing Forum  
*cum* 3<sup>rd</sup> Sigma Asia Region Conference  
Sigma Global Region Coordinator for Asia  
School of Nursing  
The University of Hong Kong



**Dr Patsy Chau**

Co-Chairperson  
10<sup>th</sup> Hong Kong International Nursing Forum  
*cum* 3<sup>rd</sup> Sigma Asia Region Conference  
School of Nursing  
The University of Hong Kong

## Congratulatory Message from Guest of Honour

I am delighted to warmly welcome everyone to the 10<sup>th</sup> Hong Kong International Nursing Forum *cum* 3<sup>rd</sup> Sigma Asia Region Conference, and to congratulate the HKU School of Nursing on organising this prestigious event. With the support from 41 renowned universities and institutes worldwide, this is a great opportunity to share our experiences with other countries and regions and to learn from the experiences of other places in tackling modern day nursing challenges.

The theme of the Forum this year is “Nursing’s Evolving Roles in Transforming Global Health: Challenges and Opportunities”, which underscores the importance of the evolving role of the nursing profession, especially during the challenging time of the worldwide COVID-19 pandemic.

Bringing together local and international nursing experts, this Forum offers an excellent opportunity to enhance professional networks and intersectoral collaboration ultimately leading to advances in nursing knowledge, technology and techniques.

This year also marks the Silver Jubilee of HKU School of Nursing. For a quarter of a century, the School has been providing not just quality education for practice and research for the nursing profession, but made remarkable contribution also in its service to the community. I commend the School for its unfailing support to the Universal Community Testing Programme in Hong Kong and the fight against COVID-19.

On the special occasion of its 25<sup>th</sup> Anniversary, I would like to pay a warm tribute to the School for its sterling achievements over the years. I am sure that with its highly motivated and innovative faculty, it will continue to contribute to the development of excellent nurses to provide quality service for the community in the years to come.

I am sure this Forum will be a roaring success and wish all participants an enjoyable fellowship and an enriching time.



**Professor Sophia Chan**

Secretary for Food and Health  
Government of the Hong Kong Special  
Administrative Region

# Virtual Exhibition Hall



Booth A  
School of Nursing,  
The University of Hong Kong



Booth B  
Johnson & Johnson



Booth C  
Hong Kong Red Cross

Booth D  
Faculty of Law,  
The University of Hong Kong

## MASTER OF LAWS in MEDICAL ETHICS AND LAW (Sept 2021 Intake)

**Mode of Study**  
1-year Full-time  
2-year Part-time

**Learn more about LLM/MEL:**  
<https://open.law.hku.hk/mel/>

**Accredited by the Law Society for Continuing Professional Development**

**Suitable for**  
Nurses, Doctors & Other Healthcare Professionals

**Application Deadline**  
1 March 2021

**Information Session**

Date: 7 December 2020  
Time: 2:30 – 3:00pm  
Zoom Meeting ID: 993 1124 9614  
Zoom link: <https://us02.zoom.us/j/99311249614>

---

**Centre for Medical Ethics & Law**

**Subscribe to get updates on:**

- Our seminars & events
- News
- Judgment summaries
- Videos
- Articles & publications

Subscribe for Email Updates & Monthly Newsletters for Free

Newsletters

Join our upcoming event

Past event

**Learn more about CMEL:**  
<https://www.cmel.hku.hk/>

CMEL  
The University of Hong Kong  
Centre for Medical Ethics and Law

# Programme at a Glance

## Day 1 (December 7, 2020)

In Hong Kong Time (UTC+8)

09:00	<b>Opening</b>
09:15	<b>Grace Tien Lecture</b> <b>Professor Patsy Yates</b> , Executive Dean, Faculty of Health, Queensland University of Technology, Australia  <i>Topic: Achieving Our Aspirations to Transform Global Health: The Essential Contribution of Nursing Now and in the Future</i>  Moderator: <b>Professor Chia-Chin Lin</b> , The University of Hong Kong, Hong Kong
10:00	<b>Break</b>
10:05	<b>Invited Symposium: Community and Mental Health Nursing</b> <b>Professor Kendall Ho</b> , The University of British Columbia, Canada <b>Professor Regina Lee</b> , The University of Newcastle, Australia <b>Dr Daniel Fong</b> , The University of Hong Kong, Hong Kong  Moderator: <b>Dr Kris Lok</b> , The University of Hong Kong, Hong Kong
10:50	<b>Invited Symposium: Smoking Cessation and Tobacco Control</b> <b>Professor Chia Kee Seng</b> , National University of Singapore, Singapore <b>Dr William Li</b> , The University of Hong Kong, Hong Kong <b>Dr Kelvin Wang</b> , The University of Hong Kong, Hong Kong  Moderator: <b>Dr Derek Cheung</b> , The University of Hong Kong, Hong Kong
11:35	<b>Invited Symposium: Gerontology and Long Term Care</b> <b>Professor Robyn Gallagher</b> , The University of Sydney, Australia <b>Professor Yun-Hee Jeon</b> , The University of Sydney, Australia <b>Dr Wenru Wang</b> , National University of Singapore, Singapore <b>Professor Doris Yu</b> , The University of Hong Kong, Hong Kong  Moderator: <b>Dr Polly Li</b> , The University of Hong Kong, Hong Kong
12:35	<b>Invited Symposium: Cancer and Palliative Care</b> <b>Professor Sheree Smith</b> , Western Sydney University, Australia <b>Dr Wendy Lam</b> , The University of Hong Kong, Hong Kong, Hong Kong <b>Dr Denise Cheung</b> , The University of Hong Kong, Hong Kong, Hong Kong  Moderator: <b>Dr John Fung</b> , The University of Hong Kong, Hong Kong
13:20	<b>End of Day 1</b>

# Programme at a Glance

## Day 2 (December 8, 2020)

In Hong Kong Time (UTC+8)

09:00	<b>Serena Yang Lecture</b> <b>Professor Terri Weaver</b> , Dean, College of Nursing, University of Illinois at Chicago, the United States <i>Topic: COVID-19: Opportunities for Invention and Role Evolution</i> Moderator: <b>Professor Chia-Chin Lin</b> , The University of Hong Kong, Hong Kong
09:45	<b>Break</b>
09:50	<b>HKU School of Nursing 25<sup>th</sup> Anniversary Lecture</b> <b>Professor Patricia Flatley Brennan</b> , Director of the National Library of Medicine, the United States <i>Topic: Leveraging Data Science for Global Health: NLM's Partnership with Nursing Internationally</i> Moderator: <b>Professor Chia-Chin Lin</b> , The University of Hong Kong, Hong Kong
10:35	<b>Break</b>
10:40	<b>Sigma Theta Tau Asia Region Symposium</b> <b>Professor Elizabeth A. Madigan</b> , Sigma Theta Tau International Honor Society of Nursing, the United States <b>Professor Claudia Lai</b> , The Hong Kong Polytechnic University, Hong Kong <b>Dr Yong-Shian Shawn Goh</b> , National University of Singapore, Singapore <b>Dr Hung-Da Dai</b> , Taipei Veterans General Hospital, Taiwan <b>Professor Rozzano Locsin</b> , Tokushima University, Japan <i>Topic: Adapting to a New Normal in Nursing Education and Practice</i> Moderator: <b>Dr Janet Wong</b> , Sigma Global Region Coordinator for Asia, and The University of Hong Kong, Hong Kong
12:50	<b>Closing remarks</b>
13:00	<b>End of Day 2</b>

## Grace Tien Lecture

**D**istinguished Professor Patsy Yates, AM, PhD, RN, FACN, FAAN is a Registered Nurse with extensive experience as a leader in education and research in the health sector. She is the Executive Dean of the Faculty of Health and, prior to her appointment in 2020, Professor Yates was Professor and Head of School of Nursing, Queensland University of Technology (QUT). QUT is a major Australian university with a global outlook and a 'real world' focus.

Professor Yates is also Co-Director for QUT's Centre for Healthcare Transformation. The Centre's research programs focus on improving the efficiency and effectiveness of health services for the benefit individuals, communities and health systems.

She leads a large competitively-funded research program focused on developing workforce capacity in cancer, palliative and aged care, advancing the management of cancer-related symptoms and treatment side effects, and strengthening the nexus between research, policy and practice in cancer, palliative and aged care.

Professor Yates is a Fellow of the American Academy of Nursing and the Australian College of Nursing. She has been inducted into the International Nurse Researcher Hall of Fame of Sigma Theta Tau International Honour Society of Nursing and was awarded the prestigious USA Oncology Nursing Society Distinguished Researcher Award in 2018. She has also received a Citation from the Australian Learning and Teaching Council for Outstanding Contribution to Student Learning. In 2020, she was appointed a Member of the Order of Australia (AM) in the General Division for significant service to tertiary education, to cancer and palliative care nursing, and to medical research.

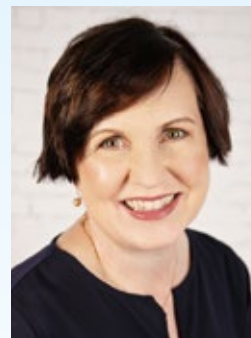
Professor Yates is the current President of the International Society of Nurses in Cancer Care, an international membership organization of oncology nurse leaders dedicated to improving the health and well-being of people at risk for or living with cancer, promoting the nurse's role in improving cancer care, and developing nursing leadership in cancer care delivery. She is also a past-President of Palliative Care Australia, the national peak body for palliative care.

### Grace Tien Lecture

**Hong Kong Time : Dec 7, 9:15am**

### Achieving Our Aspirations to Transform Global Health: The Essential Contribution of Nursing Now and in the Future

The efforts of nursing directly impact health at both individual and population levels in both local and global contexts. Increasingly the significance of these efforts in addressing social determinants of health and ensuring positive health outcomes is acknowledged, yet much more can be done to optimise nursing's contribution. This presentation will examine opportunities and challenges facing the nursing profession as we seek to transform the ways in which health care is organised and delivered to leave no one behind and maximise health for all in our community.



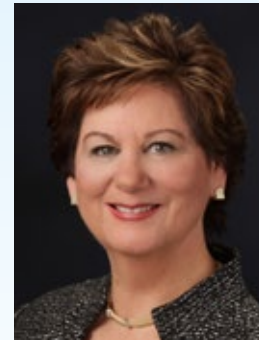
**Professor Patsy Yates**

Executive Dean, Faculty of Health  
Queensland University of Technology  
Australia



## Serena Yang Lecture

Professor Terri E. Weaver, Dean and Professor of the University of Illinois at Chicago College of Nursing, earned a BSN from the University of Pittsburgh and an MSN and PhD from the University of Pennsylvania. She is recognized internationally for her research on the effect of daytime sleepiness on daily behaviors and assessment of treatment outcomes. Supported by the National Institutes of Health, Professor Weaver's scholarship has been widely disseminated in more than 100 publications. She received the Ada Sue Hinshaw Award, the preeminent award of the Friends of the National Institute of Nursing Research, for research that improves health care and was selected by Crain's Chicago Business as one of the Notable Women in Healthcare. Professor Weaver is an inductee of the Sigma Theta Tau International Research Hall of Fame. She is a Fellow and past Board member of the American Academy of Nursing, Fellow of the American Thoracic Society, and member of the Board of the American Association of Colleges of Nursing. Professor Weaver served as Chair of the Board of the American Lung Association and was a Board member of the Sleep Research Society and the American Academy of Sleep Medicine.



**Professor Terri E. Weaver**

Dean, College of Nursing  
University of Illinois at Chicago  
the United States

### Serena Yang Lecture

**Hong Kong Time : Dec 8, 9:00am**

#### COVID-19: Opportunities for Invention and Role Evolution

Millions worldwide have become infected in the COVID-19 pandemic creating one of the most overwhelming challenges to healthcare. Through the media and testimonials, nurses have been portrayed appropriately as selfless providers on the forefront of care delivery. But, beyond the face of clinical expertise, the pandemic has been a gateway for the profession to evolve. As opportunities were created, nurses seized on possibilities by taking leadership in organizing high intensity care, shifting duty assignments, pivoting to deliver ambulatory and community-based care through telehealth, and capitalizing on prospects for invention. New roles in care delivery were created including conceiving methods to limit the spread of COVID-19 among the homeless, leading interprofessional teams, establishing and managing COVID-19 testing stations, and utilizing their voice for patient advocacy and public health. Education also changed. Schools of nursing moved quickly to online education, found substitutions for clinical experience that still developed critical thinking, and found ways to reinvent the classroom while maintaining connection with students. Finally, investigators extended their research projects to address the impact of COVID-19. They also discovered work arounds to recruit patients, collect data, and implement protocols in a touch-less, remote environment. Out of those modifications came novel approaches that will have an impact on research beyond the pandemic. This presentation will examine the ways in which nurses not only thrived in this disrupted environment, but advanced their practice, developed new methods of education and original curricula, and extended research to examine the impact of the virus while redesigning their methodology.

## HKU School of Nursing 25<sup>th</sup> Anniversary Lecture

Professor Patricia Flatley Brennan, RN, PhD, is the Director of the National Library of Medicine (NLM) at the National Institutes of Health (NIH). NLM is the world's largest biomedical library and producer of digital information resources used by scientists, health professionals, and members of the public. Since becoming director in August 2016, Professor Brennan has positioned the Library to be the epicenter for biomedical data science at NIH and across the biomedical research enterprise globally. Her leadership has led to the development of a new strategic plan that refocuses and enhances NLM's research, development, training, and information systems. By leveraging NLM's heavily used data and information resources and programs, Professor Brennan is strengthening and advancing NLM's data infrastructure to accelerate data-driven discovery and health, engage new users in new ways, and develop the workforce for a data-driven future.

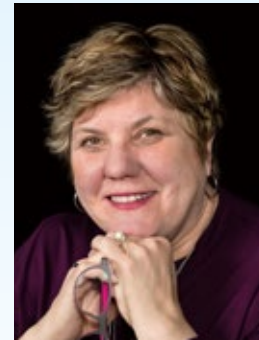
Prior to joining NIH, Professor Brennan was the Lillian L. Moehlman Bascom Professor in the School of Nursing and College of Engineering at the University of Wisconsin–Madison. She also led the Living Environments Laboratory (now the Virtual Environments Group) at the Wisconsin Institute for Discovery, which develops new methods for the effective visualization of high-dimensional data.

Professor Brennan is a pioneer in the development of innovative information systems and services, and her professional accomplishments reflect her background, which unites engineering, information technology, and clinical care to improve public health and ensure the best possible experience in patient care. Professor Brennan holds an appointment as associate investigator in the National Institute of Nursing Research Division of Intramural Research, where she directs the Advanced Visualization Laboratory.

Professor Brennan received a Master of Science in Nursing from the University of Pennsylvania and a PhD in industrial engineering from the University of Wisconsin–Madison. Following seven years of clinical practice in critical care nursing and psychiatric nursing, she held academic positions at Marquette University, Case Western Reserve University, and the University of Wisconsin–Madison.

A past president of the American Medical Informatics Association, Professor Brennan was elected to the National Academy of Medicine in 2001. She is a fellow of the American Academy of Nursing, the American College of Medical Informatics, and the New York Academy of Medicine.

In 2020, Professor Brennan was inducted into the American Institute for Medical and Biological Engineering (AIMBE). The AIMBE College of Fellows is among the highest professional distinctions accorded to a medical and biological engineer. Professor Brennan was honored for her outstanding contributions to biomedical informatics leading to the acceleration of health care technologies to enhance patient self-management.



**Professor Patricia Flatley Brennan**

Director, National Library of Medicine  
National Institutes of Health  
the United States

**HKU School of Nursing 25<sup>th</sup> Anniversary Lecture**  
**Hong Kong Time : Dec 8, 9:50am**

## **Leveraging Data Science for Global Health: NLM's Partnership with Nursing Internationally**

The National Institutes of Health recognizes the intersection between global health and local health. As part of the NIH enterprise the National Library of Medicine (NLM) is deeply committed to leveraging data science for global health.

The NLM is a leader in biomedical and health data science research and the world's largest biomedical library. There is not a biomedical discovery, public health advance, or clinical care action in the past 30 years that has not drawn on the NLM resources. As mandated by the United States Congress, NLM is charged with storing and preserving knowledge for medicine and health in perpetuity, and making it available everywhere, as needed. We open our resources, services, and products to the United States, and, by extension, to the world.

Nurses diagnose and treat human response to disease, disability, and developmental processes. As such, nurses know and understand aspects of the human phenomena outside of the purview of other health science disciplines. The literature generated by nurse researchers informs the world of their unique understanding of people and their response to disease, disability and developmental processes.

The NLM uses its vast literature and data resources, including PubMed and PubMed Central®, to advance the world's understanding of the patient experience. As health care becomes increasingly digital and data-driven, the NLM stands ready to provide literature repositories, databanks, and analytical tools needed to leverage nursing knowledge for achieving equity in health for all people worldwide.

# Sigma Theta Tau Asia Region Symposium

(Hong Kong Time: Dec 8, 10:40am)

Professor Claudia KY Lai is Honorary Professor at The Hong Kong Polytechnic University (PolyU), Honorary Nursing Consultant at The Hong Kong Baptist University, Visiting Professor at Yangzhou University, China, and Visiting Professor at Kaohsiung Medical University, Taiwan. She has practiced nursing in Hong Kong, Canada, and England, and worked briefly as a volunteer nurse in India. She has two main research programs – the care of people with dementia and their families, and the care of frail older people. She focuses on interventional and implementation research, aiming to make an impact on the health and wellbeing of humankind through changes in practice. She fosters close collaborative relationships with NGOs and charitable foundations, driving her research programs forward through continuous external funding support. In 2010, she established the Health and Cognitive Assessment Service at PolyU to advance scholarship on practice. In 2012, she led her team in founding the Centre for Gerontological Nursing at PolyU, and became a member of the Global Ageing Research Network (GARN) of the International Association of Gerontology and Geriatrics (IAGG) in the same year. Under her leadership, the Centre for Gerontological Nursing at PolyU became a member of the National Hartford Center of Gerontological Nursing Excellence (NHCGNE) in 2014. She is keen to nurture the next generation of leaders and game changers in different disciplines, and not only in nursing. Presently, she has mentees in different parts of the world. She publishes widely and won 26 research and education awards for her work on health promotion, knowledge dissemination, and dementia care. She is dedicated to the cause of dementia care and has volunteered at the Hong Kong Alzheimer's Disease Association since 1996. She serves as an honorary advisor to many NGOs and professional associations. A member of the Honor Society of Nursing, Sigma Theta Tau International (Sigma) since 1994, she actively participates in various task forces and was elected Sigma's first Regional Coordinator for the Asia Region. She was elected again for a second term and continues to drive networking and development of the Asia region in connection with the rest of the world. Over the course of her career, she has volunteered her time in local and international professional initiatives. Her outstanding achievements as a leader in nursing has been internationally recognized – she was inducted as a fellow of the American Academy of Nursing in 2015, and into the International Nurse Researcher Hall of Fame of Sigma in July 2018. Presently she is on the Board of NHCGNE.



**Professor Claudia Lai**

Honorary Professor and Founding Director  
of the Centre for Gerontological Nursing  
School of Nursing  
The Hong Kong Polytechnic University  
Hong Kong

## Presentation Title: Preparing Nurses for the “New Normal” – Where Nursing Education should be Heading

First reported in December 2019, in Wuhan, China, a novel coronavirus spread across China, Asia, and the rest of the world. The World Health Organization (WHO) named it SARS-COV-2 on February 11, 2020 and declared it as a pandemic a month later. As of November 8, 2020, 49.1 million people worldwide have contracted the virus and 1.24 million people had died from it. Nurses, one of the key healthcare professionals at the forefront, are under intense stress, both physically and mentally.

Global institutes like the WHO and the Institute of Medicine of the United States have at different times articulated the competencies needed for nurses of tomorrow. But that was before the COVID-19 pandemic. Nursing students will need to master the required competencies to become a registered professional suited to deal with future healthcare challenges. The COVID-19 pandemic has dawned upon us that not only do we need a new frame of reference thinking about our nursing curriculum, but also, we need a radical change in the delivery of the curriculum. But was it only the curriculum and the mode of its delivery that should be the foci of nursing education?

This session will discuss the various challenges faced by nurse educators amidst volatile times such as the pandemic. Professor Lai will argue that moral education and character building are just as important in modern times nursing. What we can do as nurse educators to prepare our young will also be explored.

# Sigma Theta Tau Asia Region Symposium

**D**r Shawn Goh is an Assistant Professor at Alice Lee Centre for Nursing Studies, National University of Singapore. He is also the current President for Upsilon Eta Chapter, Singapore. Dr Goh has been a registered nurse and registered mental health nurse for more than two decades. He has been actively involved in research since 2009 and his research interests ranged from Community Reintegration of people experiencing mental health conditions to innovative pedagogy used in teaching mental health nursing. Dr Goh has been an active peer reviewer for various double-blinded peer-review international journals, Open-Access Journals as well as professional organizations such as Sigma Theta Tau Honour Society.



**Dr Yong-Shian Shawn Goh**

Assistant Professor, Alice Lee Centre for Nursing Studies

Yong Loo Lin School of Medicine  
National University of Singapore

Singapore

## Presentation Title: Moving Forward in the New Normal: How We Prepare Our Nursing Students for Future Practice

Nursing education has been severely impacted with the restrictions resulted from COVID-19 pandemic. Students were made to stay at home and learn through the use of online platforms due to safe distancing measures imposed in Singapore to prevent community outbreak. These preventive measures had posed challenges to both students as well as educators as they faced a dramatic change in the way nursing has been taught all these years. In this sharing session, Dr Goh will be sharing on the specific measures taken by his team in Alice Lee Centre of Nursing Studies to negate these challenges.



# Sigma Theta Tau Asia Region Symposium

**D**r Dai, one of the first generation male nurses of Taiwan, is currently a nursing supervisor at Taipei Veterans General Hospital. He has more than 25 years of experience in perioperative nursing care. He also experienced in community nursing, long-term care administration, and simulation teaching since he had worked at Health Department of Taipei City Government and National Taipei University of Nursing and Health Science. He received his Master Degree in Nursing Administration from Taipei Medical University and his PhD degree from National Yang Ming University. His major research interests include perioperative nursing care, quality of working life, and issues related to men in nursing.

Dr Dai is also a committee member of Innovative Nursing Research and Policy Group, Center for Excellence, Taiwan Nurses Association (TWNA). He received internship at Sigma Theta Tau International Honor Society of Nursing (STTI) in 2019.



**Dr Hung-Da Dai**  
Nursing Supervisor  
Department of Nursing  
Taipei Veterans General Hospital  
Taiwan

## Presentation Title: Adapting to New Normal in Nursing Practice: Experiences from Taipei Veterans General Hospital

Coronavirus Disease 2019 (COVID-19) has had an impact on everyone around the world. Hospitals across the world facing the challenge from the pandemic. One thing is certain - COVID-19 will be with us for the foreseeable future. We need to focus our efforts on the new reality and how we are adapting to the era of new normal. Development of COVID-19 pandemic in Taiwan will be introduced. Strategies and measures to coexist with the pandemic at front lines of hospital also will be shared and discussed in this session.

## Sigma Theta Tau Asia Region Symposium

Professor Rozzano Locsin is Professor Emeritus of Graduate School of Biomedical Sciences of Tokushima University. A Fellow of the American Academy of Nursing (FAAN), he is a renowned global scholar with honorary and visiting professorships in universities in Thailand and the Philippines. He is also Professor Emeritus of Florida Atlantic University, the United States.

### Presentation Title: Searching for Nursing in the New Normal through Technological Competency as Caring in Nursing

The search for nursing in the new normal is challenging nursing education and practice. Through the advent of disruptions caused by sudden and critical circumstances in the global community, the standards of teaching and learning in nursing have now become atypical and more technologically dependent. Simulations technologies, audiovisual technologies and social media have contributed greatly to the continuous appreciation of finding meaning in being human in a high-tech world. The purpose of this presentation is to illuminate the normalcy that technologies bring to nursing education and practice. Conditions and situations inform creative, innovative, and imaginative ways by which nursing can adapt to the demands of teaching and learning during the dominant era of the Anthropocene, the high-tech world of artificial intelligence, and the dependencies created through healthcare robotic in the new normal. Altogether the influential impact of technological competency as caring in nursing, technological dependency, and technological caring in nursing ultimately legitimize the search for Nursing in the new normal in nursing education and practice.



**Professor Rozzano Locsin**

Professor Emeritus  
Graduate School of Biomedical Sciences  
Tokushima University  
Japan

# Invited Symposium: Community and Mental Health Nursing

(Hong Kong Time: Dec 7, 10:05am)

Professor Kendall Ho is an emergency medicine specialist in Vancouver, Professor in the University of British Columbia (UBC) Faculty of Medicine, and the Lead of the Digital Emergency Medicine Unit. He is the lead of the Virtual Care pillar of the BC Emergency Medicine Network in helping the BC Ministry of Health to set up virtual care services in response to COVID.

He has gained professional recognition for his ground-breaking digital health research, applying innovative technologies and data science to support patient transition between emergency departments and the community.

He is the inaugural Academic Director of the UBC Community Health and Wellbeing Cloud Innovation Centre, a collaboration with Amazon Web Services, Inc. (AWS). This Centre is the first of its kind in Canada and the 8<sup>th</sup> in the world.

Professor Ho is frequently sought to contribute to provincial and national health policy-making organizations, for example: the BC Ministry of Health Digital Health Strategy Clinical Leadership Committee, the BC Academic Health Sciences Network Clinical Trials Advisory Board, the Health Canada Scientific Advisory Committee in Digital Health Technologies, the National Research Council Digital Health Research Group Advisory Council, and the Canadian Virtual Health Task Force Education Working Group.

Internationally, Professor Ho is a founding member of the International Federation of Emergency Medicine New and Advanced Technologies Interest Group and a member of the International Federation of Medical Informatics Telehealth Group. He is an adjunct professor of Hong Kong University, China, and a past adjunct professor of Korea University Medical School. He actively collaborates with academic partners and presents his work across Canada and internationally in Asia, Europe, and Australasia.

Professor Ho has received multiple provincial and national awards in recognition of his work in research, education, community services, and public engagement in digital health. He is a visiting professor in several universities internationally, and is a fellow of the Canadian Academy of Health Sciences.



**Professor Kendall Ho**

Professor, Department of Emergency Medicine  
Faculty of Medicine  
The University of British Columbia  
Canada

## Topic: Digital Emergency Medicine @UBC: From COVID to Sustainability

Digital health has been gradually gaining popularity in the last decade, due to improving technologies, increasing public expectations, and increasing interests from health professionals and health policy makers. COVID has caused a massive adoption of digital health, propelling it into mainstream. This session is to explore how digital health is being incorporated into the health system operationalization in BC, Canada, what lessons we have learned, and how digital health will now become an entrenched part of routine healthcare delivery, thereby permanently transforming our health system in serving our patients.

## Invited Symposium: Community and Mental Health Nursing

Professor Regina Lee has practiced nursing in Canada and Hong Kong in the areas of NICU, pediatrics, school health and public health. She obtained her nursing registration in Edmonton, Alberta and Toronto, Ontario in Canada, New South Wales in Australia and in Hong Kong. She received her Bachelor Science degree in nursing from the University of Alberta in Canada and her Master of Science Degree in community health nursing from the D'Youville College, New York, the United States. She then obtained her doctoral degree in nursing at School of Nursing, The Hong Kong Polytechnic University, Hong Kong. She had been working as a paediatric nurse in Edmonton and a public health nurse in Toronto, Canada. She has developed a Master of Child & Adolescent Stream Speciality and she is currently a full Professor in Nursing at the School of Nursing and Midwifery, University of Newcastle, New South Wales, Australia. Her research focus on the health and development of Child & Adolescent Care. She is the founder and President of Hong Kong School Nurses Association in Hong Kong. Professor Lee is the Vice President and Chair of the Examination Sub-Committee for the Hong Kong College of Paediatric Nursing. She is the convener of the Asia Pacific Child and Adolescent Health Research Network at the University of Newcastle. She is currently collaborating with WHO and regional experts from various universities to conduct research on the association and predictors between healthy lifestyle behaviors and health-related quality of life among adolescents. Professor Lee has been working with local and international experts to address the health needs of schoolchildren with developmental disabilities. She has also implemented weight management programme for obese schoolchildren and collaborates with school teachers to implement school-based health projects that provide primary health care services including health education and promotion and disease prevention for the schoolchildren using a multidisciplinary and inter-sectoral approach in Hong Kong. Her research interest is in the areas of promoting SWELE school playground programme with mindfulness-based intervention on children's play in early childhood to establish physical and psycho-social well-beings during times of transition; implement mHealth interventions on weight management programme for overweight children and adolescents with disabilities and their parents, developed a simplified 5-step hand washing programme, role development of school nurses and promoting healthy lifestyle behaviors and psychosocial well-beings among children and adolescents using the WHO's health-promoting school framework.



**Professor Regina Lee**

Professor  
School of Nursing and Midwifery  
The University of Newcastle  
Australia

**Topic: Association of Demographic Characteristics, Perceived Stress, Coping and Mental Wellbeing among Frontline School Nurses during the SARS-CoV-2 Virus Pandemic: An Online Cross-Sectional Survey**

## Invited Symposium: Community and Mental Health Nursing

**D**r Daniel Y.T. Fong is currently an Associate Professor at the School of Nursing of The University of Hong Kong. He received his degrees of BSc (1st Hons) in Mathematics and MPhil in Statistics from The University of Hong Kong. He then obtained his PhD in Statistics from the University of Waterloo, Canada. Dr Fong is an experienced biostatistician in health research with over 15 years of experience in clinical trials and statistical consulting. Specifically, he focuses on the application of the best available methods to scientific research in health-related fields, and to develop novel methodologies that could improve the application. Dr Fong's main research themes are Noise induced Health Issues, Adolescent Idiopathic Scoliosis (AIS) and Patient Reported Outcomes (PRO). All require use of proper and sometimes innovative statistical methods. To date, over 200 papers have been published or accepted in international peer-reviewed journals under these themes, including biostatistical methods development and multi-disciplinary research. In particular, the work on AIS has provided new highly graded evidence on a long controversy of scoliosis screening, and the team had been invited to participate in an international task force to review the current evidence of screening for AIS. Moreover, they have shown how physical activity may help improve clinical outcomes including quality of life, and ensured reliable and valid PRO tools are being used in practice, which include but not limited to the SF-12, Weinstein Noise Sensitivity Scale, Chinese Breast Cancer Screen, and Functional Living Index - Cancer. Since 2012, Dr Fong has been elected as the President of the Hong Kong Society for Quality of Life. He is currently appointed as an Associate Editor of the journal of Quality of Life Research, and is also serving in the Editorial Board of Scientific Reports.



**Dr Daniel Fong**

Associate Professor  
School of Nursing  
The University of Hong Kong  
Hong Kong

### Topic: COVID-19's Impact on Fear and Health in the Global Community

The coronavirus disease 2019 (COVID-19), brought about by the severe acute respiratory syndrome coronavirus 2 (SARS-CoV-2), has been one of the most profoundly infectious and quickly spreading infection flare-up ever. Not just has the pandemic intensely affected the physical wellbeing and economy around the globe; yet additionally the mental prosperity of people, networks, and society. However, the mental and social effects of the COVID-19 pandemic, including lockdown or isolate globally, have not been very much portrayed. Therefore, we have embarked on an international survey for assessing COVID-19's impact on fear and health (CARE). The CARE project aims to assess the health-related impact of the COVID-19 pandemic in community-dwelling individuals around the world, and identify future needs for preparation of a pandemic. To date, 30 countries around the world are actively participating in the project, involving over ten languages and over 50 investigators. This talk shall present preliminary results from this on-going international project.

# Invited Symposium: Smoking Cessation and Tobacco Control

(Hong Kong Time: Dec7, 10:50am)

Professor Chia Kee Seng is a medical epidemiologist and Professor of Public Health at the School of Public Health in National University of Singapore.

## Topic: Should E-Cigarettes be Banned?

E-cigarettes have been proposed as a safer alternative to cigarette smoking and an effective aid to smoking cessation. Even among public health professionals, the views are highly divided especially as a smoking cessation aid. It is therefore not surprising that policy responses vary widely among countries. This presentation will highlight the need to have an approach that is consistent with the tobacco control policy of a country.



**Professor Chia Kee Seng**

Professor  
Saw Swee Hock School of Public Health  
National University of Singapore  
Singapore



# Invited Symposium: Smoking Cessation and Tobacco Control

**D**r William Li is an Associate Professor and serves as the Chair of the Teaching and Learning Committee (Postgraduate Education) and the Director of the Doctor of Nursing Programme at The University of Hong Kong.

Dr Li has made significant contributions to transforming smoking-cessation interventions. His research work provided a model that can be adopted by other countries. He has published >120 peer-reviewed journal articles and these publications have been highly cited and referenced worldwide. He has also obtained research grants totalling >35 million Hong Kong dollars. Dr Li is regarded as a world leader in the development and evaluation of smoking-cessation interventions and health policy. His work has had critical and substantial impacts on health service, policy and research.

Dr Li was awarded the Teaching Medal at The University of Hong Kong in 2010 and was appointed Senior Fellow of the Higher Education Academy in the United Kingdom in 2017. Moreover, he was appointed as a Specialist of the Hong Kong Council for Accreditation of Academic and Vocational Qualifications, which provides professional advice to health-related institutions and organisations.

In recognition of his significant and sustained contribution to nursing research, education development and professional services, he was awarded a Fellowship by the American Academy of Nursing in 2019, and was made a Fellow of Education and Research by the Hong Kong Academy of Nursing in 2020.



**Dr William Li**  
Associate Professor  
School of Nursing  
The University of Hong Kong  
Hong Kong

## Topic: The Importance and the Challenges to Help Smokers with Non-Communicable Diseases to Quit

**Objectives:** Patients with non-communicable diseases who continue smoking are often “hard-core” smokers with no intention to quit. This group represents a challenge because they are less likely to be affected by the current tobacco control interventions or policies, eventually will make up a larger proportion of the remaining smokers in the community. This study aimed to test the effectiveness and the feasibility of using a general health promotion approach to motivate smokers to first engage in any desirable health behaviour, and later quit smoking.

**Methods:** We conducted a phase II randomized controlled trial. Smokers in the intervention group received an individual face-to-face brief motivational interviewing (MI) with generic advice on selected health behavior. More brief MI messages were delivered to them via WhatsApp/WeChat for 6 months. For subject in the control group, they were asked to indicate their desirable health-related practice. The primary outcome was biochemically validated smoking abstinence at 12 months.

**Results:** We randomly assigned 60 eligible subjects recruited in an out-patient clinic into the intervention group (n=30) receiving brief MI or control group (n=30) receiving a self-help smoking cessation booklet. Compared with the control group, the intervention group had higher biochemically validated abstinence at 12 months: 16.7% (5 of 30) vs 6.7% (2 of 30) (P = .23), with an unadjusted odd ratio of 3.39 (95% CI, 0.57-20.10; P = .23).

**Implications for practice:** Our phase II randomized controlled trial demonstrates the feasibility and potential benefits of a general health promotion approach using brief MI to help smokers with NCDs to quit.

## Invited Symposium: Smoking Cessation and Tobacco Control

**D**r Kelvin Wang is Associate Professor, Director of the Master of Nursing Program, School of Nursing, The University of Hong Kong. He is a Fellow of the American Academy of Nursing, visiting scientist at the Harvard TH Chan School of Public Health, visiting associate professor at the School of Nursing at Kaohsiung Medical University, and Council member of the Hong Kong Council on Smoking and Health. His main research directions are tobacco control policy research, smoking cessation behavior, drinking and alcohol abuse behavior, and health information communication technology. Dr Wang is leading a number of research projects on tobacco-related policies in Hong Kong, large-scale randomized controlled trials to evaluate the effects of complex interventions in promoting healthy behaviors and improving mental health, research on the use of mobile information and communication technology in intervention trials, family and health information survey research, smartphone addiction, and COVID-19 and new normal studies on mental health, behaviors and communication. His team currently includes 3 post-doctoral fellows and 6 PhD students with major interests on bigdata analytics, text-mining and machine learning. Many research results have been adopted by local smoking cessation service providers and implemented by relevant government departments. He has published more than 130 research papers in international high-impact journals such as JAMA Internal Medicine, Lancet Digital Health, JAMA Pediatrics, Addiction, Tobacco Control and JMIR. Dr Wang is the associate editor for BMC Public Health and editorial member of Scientific Reports.



**Dr Kelvin Wang**

Associate Professor  
School of Nursing  
The University of Hong Kong  
Hong Kong

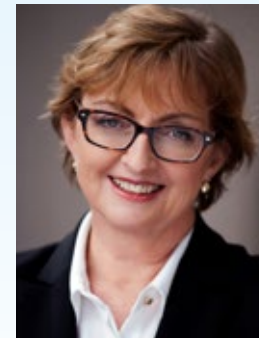
### Topic: Mobile Health Interventions for Complex Behavioural Problems: Experience from Randomised Controlled Trials

Mobile health (mHealth) interventions is a feasible and accessible approach to promote behaviour change at the population level. Personalised behavioural supports are warranted since the patterns of unhealthy behaviors, such as smoking and alcohol drinking, differ across individuals. Real-time support helps improve the sense of psychosocial support perceived by individuals and potentially address the craving for smoking or drinking, which can occur suddenly. Widespread use of instant messaging apps led to new opportunities for delivering personalized, interactive, and real-time behavioural support through chat messages at low cost. The theoretical frameworks, such as Behaviour Change Techniques (BCT), were essential for designing smoking cessation and alcohol reduction interventions. Enhancing participants' engagement in the intervention and advanced statistical analysis methods to handle data collected from large-scale mHealth intervention need to be planned carefully. Dr Wang will share the experience about his team's ongoing mHealth studies to intervene in complex smoking and alcohol drinking behaviours in Hong Kong.

# Invited Symposium: Gerontology and Long Term Care

(Hong Kong Time: Dec 7, 11:35am)

Professor Robyn Gallagher is Professor of Nursing at the University of Sydney where she leads a team researching secondary prevention of cardiovascular disease. Her focus includes contemporary health technology, cardiac rehabilitation, health literacy and cognitive impairment. Professor Gallagher has received national and international awards for her research and her student supervision. She is a Fellow of the American Heart Association and the European Society of Cardiology. She has published more than 170 peer-reviewed papers and 12 book chapters. Professor Gallagher is current Chair of the International Council of Cardiovascular Prevention and Rehabilitation and immediate past President of the Australian Cardiovascular Health and Rehabilitation Association, and Cardiovascular Nursing Council of the Cardiac Society of Australia and New Zealand, Editor of the Journal of Advanced Nursing and program committee member for the European Society of Cardiology Cardiovascular Nurses and Allied Professionals.



**Professor Robyn Gallagher**

Professor of Nursing, Susan Wakil School of Nursing and Midwifery  
Faculty of Medicine and Health  
The University of Sydney  
Australia

## Topic: Mild Cognitive Impairment in Acute Coronary Syndrome Patients: Protective Effects of Being Married/Partnered and Education

**Purpose:** This study aimed to determine the prevalence and predictors of cognitive impairment in acute coronary syndrome (ACS) patients during hospital admission.

**Methods:** ACS (myocardial infarction, unstable angina) inpatients (n=81) who did not have a neurocognitive diagnosis were recruited to a prospective descriptive study in 2019. Cognitive performance was assessed using the Montreal Cognitive Assessment (MoCA) and the Hopkins Verbal Learning Test (HVLT).

**Results:** The sample had an age mean of 63.49±10.86 (range 40-89) years and was mostly male (82.7%) and 50.6% were university educated. Myocardial infarction occurred in 56.8%.

The mean education adjusted MOCA score was 25.73±3.05 (range 18-31) and 48.1% were classified as having mild CI (18-26). Delayed Recall/Memory domain had the worst performance at mean 2.58±1.77 (of potential 0-5) points. The HVLT total recall score was mean 19.56±6.18 (range 0-32), and 14.8% were classified as having mild CI (Z-score ≥-1). Mild CI was classified in 53.1% on either/both tests.

Patients classified as having mild CI (MOCA) were significantly older (66.87 versus 60.36 years, p=.006), less likely to be married/partnered (21% versus 32% p=.039) and to have hypertension (79.5% vs 57.1%, p=.027). Taking all factors into account, better cognitive performance (MOCA adjusted) occurred for participants who were married/partnered ( $\beta = 1.93$ ), had >high school education ( $\beta = 1.20$ ) and STEMI diagnosis ( $\beta = 1.23$ , 95% CI .01, 2.66). Cognitive performance declined with every additional year of age ( $\beta = -.09$ , 95%CI -.15, -.01).

**Conclusions:** Mild CI is common in ACS patients pre-discharge, affecting delayed recall and memory most often and patient education strategies should be developed to accommodate this challenge. Being married/partnered and more educated may have protective effects, therefore additional patient education and support strategies may need to be directed to single, less educated and older patients.

## Invited Symposium: Gerontology and Long Term Care

**P**rofessor Yun-Hee Jeon, BHSc(Nursing) (1992), MNRes (1995), PhD (2002) (Newcastle), is the Susan and Isaac Wakil Professor of Healthy Ageing at Sydney Nursing School, The University of Sydney.

Professor Jeon is a leading nurse academic in gerontological nursing and psychogeriatrics, with extensive expertise in action research, behavioural intervention trials, qualitative research, mixed methods and systematic reviews. She is internationally recognised as a leader in research to person-centred care, reablement, measuring quality and dementia care outcomes, dementia psychosocial interventions and aged care clinical leadership. Her key contribution to research is that she has demonstrated that quality of life and wellbeing of older people with dementia improves when they are cared for by nursing and other care staff who understand and practice person-centred care. Her research outputs have been used to inform policy development as well as practice improvement in aged and dementia care. Professor Jeon has a strong track record in industry partnership projects, bringing multidisciplinary team members, consumers, health and aged care service providers, local and federal government policy makers, and dementia/aged care peak bodies together in the majority of her research endeavours. She is currently leading two major programs that are designed to improve patient and public involvement in dementia and aged care research: StepUp for Dementia Research and CPC Citizen Science node. StepUp for Dementia Research is the Australian 1<sup>st</sup>, designed to improve healthcare consumer and public involvement in dementia and aged care research. CPC Citizen Science node brings together over 10 health and science disciplines, with a goal to enhance citizens/public engagement and involvement in advancing science and knowledge translation.

Professor Jeon has received several national competitive grants as a principal or co-Chief Investigator for aged/dementia care and health services research studies, as well as 40 other grants from aged care organisations, professional bodies, governments and NGOs (total \$4.5million as a 1<sup>st</sup> investigator; \$4.5 million as a co-investigator). She has over 120 peer reviewed publications over her career, publishing with 221 co-authors, and 2090 citations (Scopus H-index 28); presented papers and workshops at >100 conferences, plus >70 invited talks locally and internationally. She manages over 15 research project staff. She currently mentors a number of postdoctoral fellows and has 6 PhD, 2 1<sup>st</sup> Class Honours and 1 MPhil thesis completions in the past 5 years. She has successfully mentored 6 Summer Scholars, and also provides on-going mentorship to her school early career researchers as well as clinicians in developing their research skills and promoting research.

Professor Jeon is Associate Editor of Aging and Mental Health and has served on Scientific Program Committee (SPC) for the Alzheimer's Association (AAIC) (2016-19), Research Impact Fund Committee, Hong Kong Research Grants Council (2018-20), New Zealand Health Research Council Clinical Trials Public Health Assessment Committee (2020), Dementia Australia Research Foundation (DARF) Scientific Review Panel (2015-2020), NHMRC Boosting Dementia Research Leadership



**Professor Yun-Hee Jeon**

Susan and Isaac Wakil Professor of Healthy Ageing  
The University of Sydney  
Australia



Fellowships Grant Review Panels, DCRC Grant Review Panel, NHMRC/ARC Dementia Research Development Fellowships Grant Review Panel. Professor Jeon has served on 16 local and national expert advisory groups relating to dementia/aged care (clinical, policy), e.g. Australian Government Residential Aged Care Funding Reform Working Group (2019-21), Sydney Health Partners Consumer Involvement in Research Project Governance Group (2019-21), Australian Aged Care Quality Agency Working Group for the Consumer Experience Report (2016-7), ADNeT Quality Registry Steering Committee (2019-23), Int. Council of Nurses Aged Care Expert Group (2017-18). Professor Jeon leads a Technical Working Group and is a member of Development Group for WHO Package of Rehabilitation Interventions (Dementia) (2020-21).

### **Topic: Reclaiming Nursing in Rehabilitation and Reablement in the Context of Dementia Care**

Worldwide, there are an estimated 50 million people with dementia, the majority of whom live in the community, often supported by their families or close friends, with or without formal support. Remaining independent and staying home as long as possible, and as well as possible, are two of the most common desires of those individuals living with dementia, hence the importance of rehabilitation, restorative care and reablement services. Through these approaches to care and support individuals are enabled to maximise and maintain their independence. In recent years, there has been an increasing emphasis on rehabilitation in dementia care but the role of nurses in dementia specific rehabilitation programs has been limited. The I-HARP (Interdisciplinary Home-bAsed Reablement Program) will be presented to demonstrate how this interdisciplinary model, involving nurses, occupational therapist, other allied health professionals fills this gap, addressing common challenges that people with dementia experience due to environmental risks for disability, functional decline and multi-morbidity, and leading to their improved independence.

## Invited Symposium: Gerontology and Long Term Care

**D**r Wenru Wang is currently a tenured Associate Professor at the Alice Lee Centre for Nursing Studies, Yong Loo Lin School of Medicine, National University of Singapore (NUS). Associate Professor Wang has over 28 years of professional experiences in clinical nursing and university teaching. She has extensive teaching experience in both undergraduate and postgraduate academic nursing programs in several top universities in Asia, including Xi'an Jiaotong University, the Chinese University of Hong Kong, Macao Polytechnic Institute, and NUS. Associate Professor Wang has contributed to the development of the nursing academic programs and has been appointed as module leads, program director and member of academic program development and review committees in the past 28 years at various universities. Associate Professor Wang has supervised many honors, master and doctoral students and has been the internal and external examiner for many PhD students. She has received Teaching Excellence Award from NUS for her high level of performance and dedication to teaching.

Associate Professor Wang's major research interests include chronic illness and long-term care, primarily focus on cardiovascular nursing and cardiac rehabilitation. Over the past years, she has been awarded over 30 external competitive grants with amount of more than S\$3.0 million (i.e. US\$2.5million). Her research expertise covers quantitative, qualitative and mix-design methods. Associate Professor Wang has authored two books, ten book chapters and has published over 160 peer-reviewed papers in international medical/nursing refereed journals and over 30 papers in local and regional scientific journals. She has presented her research at over 80 international conferences and has been invited to deliver keynote speeches and conduct seminars/workshops at various national and international nursing conferences and universities. She has been recognized with several national and international awards for the achievement in her research endeavors.

Associate Professor Wang is the Fellow of American Academy of Nursing. She takes the role as the director of Chronic Illness and Long-term Care Research Program of Alice Lee Centre for Nursing Studies, NUS. She is also an Ambassador of World Federation of Critical Care Nurses, and a member of Alexandra Health System Nursing Research Committee in Singapore. Associate Professor Wang also holds the position of Visiting Professor of Hubei University of Medicine and a Distinguished Professor of Anhui Medical University, China. In addition, she has been appointed an Associate Editor of BMC Nursing, and a member of Editorial Board of several top international nursing journals, including Journal of Advanced Nursing, European Journal of Cardiovascular Nursing, Heart & Lung, Journal of Clinical Nursing, & Nursing and Health Sciences. She has also served as a member of review panel of over 20 international medical/nursing journals. Associate Professor Wang has also been appointed as a Professional Specialist in nursing research program by the Research and Education Department of the Health Ministry of China since 2003.



**Dr Wenru Wang**

Associate Professor, Alice Lee Centre for Nursing Studies  
Yong Loo Lin School of Medicine  
National University of Singapore  
Singapore

## Topic: Development and Pilot Testing of a Salutogenic Theory-Based Health Resource Program to Promote Healthy Aging among Senior-Only Households in Singapore

**Background:** Among aging populations, orientation towards health management shifts from disease-focused to health-focused. Countries have channelled various resources to facilitate older adults to age healthily. However, navigating through these resources to promote physical, psychological, social and spiritual health can be challenging for older adults residing in senior-only households.

**Aim:** To develop and pilot-test a multi-dimensional health resource program, titled, Salutogenic Healthy Aging Program EmbraceMENT (SHAPE) to promote older adults residing in senior-only households to age healthily and meaningfully.

**Methods:** Underpinning the theoretical framework of this project is the Salutogenic Model of Health (SMH), focusing on sense of coherence (SoC) and generalized resistance resources. The SHAPE was developed based on the findings from literature and qualitative findings, as well as concepts from SMH. A two-arm pilot randomized controlled trial involving 10 participants per arm was conducted to test the feasibility and acceptability of SHAPE, as well as its potential effects on SoC, self-efficacy, quality of life and health promoting behaviours among older adults residing in senior-only households.

**Results:** SHAPE was designed to comprise 12 weekly group sessions, at least two home visits and a health resource book. Although the pilot study found challenges in recruiting participants, treatment adherence and data collection processes were satisfactory. Participants who received SHAPE intervention found it useful and relevant, and they benefited from the knowledge gained on health resources. Positive trends were observed in their SoC, overall health behaviour and spiritual growth.

**Conclusion:** The SHAPE intervention is a comprehensive person-centric health resource program grounded by strong theoretical basis and contextual knowledge on older adults' health orientation towards aging and usage of existing resources. It is a useful and feasible complex intervention that can be implemented among senior-only households. Further evaluation on its effectiveness will be required using a full-scale randomized controlled trial.

## Invited Symposium: Gerontology and Long Term Care

Professor Doris Yu is Professor at the School of Nursing, LKS Faculty of Medicine, The University of Hong Kong (HKU). With the research expertise in gerontology and geriatric care, Professor Yu obtained over USD \$3 million research grants to support the studies on prevalent elderly issues including geriatric symptom management, disease management models for debilitating diseases, brain health promotion, strength-based and family-oriented models on dementia care and caregiving. She is currently the Associate Director of the Sau Po Center on Aging, HKU. She actively support the development and application of evidence-based practice in aged care service. In terms of academic contribution, she is the Editor of the Journal of Advanced Nursing, and serves the editorial board of several journals in nursing, gerontology and geriatric cardiology. Professor Yu actively engages in knowledge translation, and successfully secured about \$11 million of donations to implement evidence-based programs to prepare the society for population aging, enhance territory-wide brain health promotion and develop social capital to increase the wellness of socially deprived older adults. Professor Yu is member of several expert advisory panels of the Government of the Hong Kong Special Administrative Region to support priority-setting for research funding and aged care policy. She is the Panel Member of the Advisory Committee of the World Health Organization Collaborating Center in Hong Kong. She also acts as consultant and Elderly Service Board member to support aged service development in three flagship NGOs in Hong Kong.



**Professor Doris Yu**

Professor  
School of Nursing  
The University of Hong Kong  
Hong Kong

### Topic: The Effects of a Salutogenic-Based Intervention on Health Outcomes of Family Caregivers of Persons with Dementia: A Randomized Controlled Trial

**Background:** Dementia has developed into a full-blown global epidemic, with family caregiving acts as a prominent buffer to the enormous cost of formal care. While deficit model is widely used to improve their stress and health responses, least effort was directed to unlock their internal resource and optimize the positive caregiving experience for more sustainable benefits.

**Aim:** This RCT evaluated the effects of a strength-based intervention based on the salutogenic model to promote the sense of coherence and health outcomes of family caregivers of persons with dementia (PwD).

**Method:** We randomized 350 family caregivers of PwD to receive either the 14-week strength-based intervention (n = 166) or an education program (n = 184). An eclectic approach was used to integrate narrative skills to an empowerment care model to improve the coping, perceived burden and health-related quality of life of the caregivers upon the completion of interventions and at eight weeks thereafter.

**Results:** The caregivers aged 65.0 (SD = 12.3), with about half of them were child caregivers (47.7%) and the other most were spouse (47.3%). Generalized estimating Equation indicated the positive effects of the strength-based intervention in reducing perceived burden, depressed mood and mental health of the family caregivers at both evaluative time-points. Conforming to the salutogenesis model, the positive psychological benefit was mediated through an increase in sense of coherence of the caregivers, especially on how they made meaning from the challenging situation.

**Conclusion:** This study findings support the potential of paradigm shift in dementia caregiver support service development.

**Acknowledgement:** This work was supported by General Research Fund of Research Grants Council, Hong Kong (Project Number: 14639016).

## Invited Symposium: Cancer and Palliative Care

(Hong Kong Time: Dec 7, 12:35pm)

Professor Sheree Smith is an internationally recognised researcher in respiratory care and leads a program of acute care and primary health services research. Sheree is the Deputy Chair of Western Sydney University's Professoriate Leadership Group. Professor Smith is committed to developing and conducting high quality innovative research that results in improved patient outcomes through developing, testing and implementing sustainable models of care and cost effective interventions. Professor Smith is the Director of the Lung, Sleep and Heart Health Research Network and her studies are focused on patient reported outcomes and experience measurement methods, emergency care, respiratory viral infections, and integrated respiratory and cardiac care.

Professor Smith received an undergraduate nursing degree from Queensland University of Technology, Master's research degree from the University of Queensland's Department of Anthropology and Sociology, PhD in Public Health (Queensland University of Technology) and a University of Aberdeen Postgraduate Certificate in Health Economics. Professor Smith has received national and international research awards including the first international Post-Doctoral Capability Bursary to the University of Oxford's Department of Primary Health Care and Centre for Evidence Based Medicine and a Millennium Bursary from the Worshipful Company of Curriers for COPD intermediate care research whilst working at London's St Mary's Hospital, Imperial College Clinical Respiratory Research Unit. Professor Smith completed a bespoke project for the UK's National Institute of Health Research (NIHR) and from that project she developed organisational models for health care organisations to improve the completion of NIHR portfolio studies and enhance the capacity and capability of research support staff. The models have been implemented across various hospital and health care services in England.

Professor Smith is a member of four global respiratory, sleep and critical care organisations; Thoracic Society of Australia & New Zealand (TSANZ), Asia Pacific Society of Respiriology (APSR), European Respiratory Society (ERS) and American Thoracic Society (ATS). She is a member of the ERS College of Experts and the ATS International Nurses Committee. Professor Smith is an Australian National Health and Medical Research Council panel member and continues to review grant and fellowship applications for numerous funding bodies around the globe such as NIHR (UK), Asthma (UK), Medical Research Foundation (UK), European Science Foundation and the Portuguese Agency for Science and Technology Fundação para a Ciência e a Tecnologia, I.P. (FCT).



**Professor Sheree Smith**

Professor  
School of Nursing and Midwifery  
Western Sydney University  
Australia

### Topic: Is Length of Stay a Valid Outcome Measure for the Quality Care Delivered to Lung Cancer and Palliative Patients

Length of stay is often used in clinical studies as an outcome measure. This presentation highlights the limitations of length of stay and discusses the use of additional outcome measures in the evaluation of a in hospital clinical intervention for lung cancer or palliative care patients.

## Invited Symposium: Cancer and Palliative Care

**D**r Wendy WT Lam is currently Associate Professor at the School of Public Health, The University of Hong Kong (HKU). She is the Director of the HKU Jockey Club Institute of Cancer Care (JCICC). She is also the Head of the Division of Behavioural Sciences, at the School of Public Health. She is an active contributor in International Psycho-oncology Society, being a Board of Director. She was an elected IPOS Board of Director from 2014-2018. She is currently the treasurer, IPOS Executive Board from 2019-2021, and chairs or participates in various committees. She was awarded the 2007 Hiroomi Kawano Young Investigator Award by the International Psycho-Oncology Society for her work on Chinese women with breast cancer. Her research interests focus on psychosocial adaptation patterns and service optimization in cancer patients. She has produced over 200 outputs, comprising 110 publications. She is appointed as an Associate Editor for Psycho-oncology and for Patient Education and Counseling. She is currently leading the JCICC team to develop a care model to integrate psychosocial services into routine cancer care. Under her directorship, JCICC has recently established the first cancer survivorship clinic in Hong Kong offering support in managing post-treatment symptoms, as well as personalized diet and physical activity advice.



**Dr Wendy Lam**

Associate Professor and Division Head  
Division of Behavioural Sciences  
School of Public Health  
The University of Hong Kong  
Hong Kong

### Topic: Implementation of the Stepped-Care Approach for Symptom Distress Screening: A Pilot Program

The psychosocial impact of cancer is well documented. The prevailing view is that the diagnosis and treatment of cancer disrupts patients' lives, leading to psychological distress. Several studies have suggested that usually, but not always this adjustment impact resolves within the first year following diagnosis. However, recent, new evidence is revealing a different picture of adaptation to cancer and the individual differences that affect how patients respond over time to the diagnosis of cancer. This presentation will review recent work on different patterns of psychological distress among cancer patients. Factors predicting distinct trajectories are described. Specifically, the role of unrelieved physical symptom in influencing distinct trajectory patterns are explored. Recent studies showed patient self-reporting symptoms during the clinic visit or between visits via electronic platforms improved patient satisfaction with care, symptom management, and health quality of life. However, implementing routine symptom assessment and management is challenging. With a donation from The Hong Kong Jockey Club Charities Trust, we recently established the Jockey Club Institute of Cancer Care (JCICC) aiming to develop and evaluate an integrated cancer care model for implementing routine symptom assessment and management. This presentation will share insights and challenges in the development of JCICC.



## Invited Symposium: Cancer and Palliative Care

**D**r Denise Cheung is currently an Assistant Professor at School of Nursing, The University of Hong Kong. She is a registered nurse who obtained her Bachelor and PhD degrees in School of Nursing, The University of Hong Kong. She has rich experience in teaching clinical and research subjects. Her research work is in the area of complementary and alternative therapy, with particular focus on populations in need of symptom management, such as survivors of intimate partner violence, cancer patients, and caregivers. Dr Cheung has successfully accomplished large randomized controlled trials of interventions to improve health outcomes of abused women and caregivers with caregiver stress, with main findings published in JAMA Network Open and Journal of the American Geriatrics Society.



**Dr Denise Cheung**

Assistant Professor  
School of Nursing  
The University of Hong Kong  
Hong Kong

### Topic: Adapting to the Pandemic: Experience of Conducting Physical Activity Interventions in Cancer Patients

In the wake of the coronavirus disease (COVID-19) pandemic, social distancing has been an effective measure to limit virus transmission. Because cancer patients are at increased risk of severe COVID-19, they should follow the recommendations of self-isolation measures. However, physical inactivity and prolonged sitting time may result. The benefits of physical activity for cancer patients have been well-documented, such as reduced fatigue, anxiety, depressive symptoms, improved physical function and quality of life. Active lifestyles should be promoted for these patients during the pandemic. In this presentation, experience of conducting an on-going research on feasibility testing of a qigong intervention for improving well-being of older cancer survivors will be shared. This is a two-arm pilot randomized controlled trial targeting post-treatment cancer survivors aged 65 or above, in which 30 participants are randomized to a qigong or stretching (active control) group. The challenges of conducting the study will be first discussed. Then, the alternations made to the study methodology for preventing transmission of the virus as a result of group-based sessions will be described. Lastly, the feedback of participants will be summarized. It is believed that, despite the challenges faced during this pandemic, it is crucial for cancer patients to continue to benefit from physical activity interventions in a safe and feasible manner.

# Poster Presentations

## Specialty Nursing

- 1001** **A Scoping Review on the Facilitators and Barriers to Developmentally Supportive Care for Preterm Infants in Low-Middle-Income Countries**  
**Kokui Klutse**, Edith Hillan, Amy Wright, Linda Johnston  
*Lawrence S. Bloomberg Faculty of Nursing, University of Toronto, Canada*
- 1002** **Nursing Workload in Greek Paediatric Intensive Care Unit: A Cross Sectional Study**  
**Alexandra-Stavroula Nieri**, Daphne Kaitelidou, Vasiliki Matziou, Margarita Giannakopoulou  
*Faculty of Nursing, National and Kapodistrian University of Athens, Greece*
- 1003** **A Survey on Advanced Lung Cancer Patients' Physical Activity Preference and Needs**  
**Agnes Yuen Kwan Lai**<sup>1</sup>, Chia-Chin Lin<sup>1</sup>, Tai Hing Lam<sup>2</sup>, Asa Ching Man Choi<sup>1</sup>, Ka Ho Law<sup>3</sup>, Yiu Kee Ho<sup>3</sup>, Kin Fung Cheng<sup>3</sup>, Ka Wai Chau<sup>3</sup>, Ka Yee Mar<sup>3</sup>, David Chi Keung Lam<sup>4</sup>, Mary Sau Man Ip<sup>4</sup>  
<sup>1</sup>*School of Nursing, LKS Faculty of Medicine, The University of Hong Kong, Hong Kong*, <sup>2</sup>*School of Public Health, LKS Faculty of Medicine, The University of Hong Kong, Hong Kong*, <sup>3</sup>*Department of Medicine, Queen Mary Hospital, Hong Kong*, <sup>4</sup>*Department of Medicine, LKS Faculty of Medicine, The University of Hong Kong, Hong Kong*
- 1004** **Nurse Knowledge and Confidence on Peripheral Intravenous Catheter (PIVC) Insertion and Maintenance in Paediatric Patients**  
**Ferika Indarwati**, Judy Munday, Samantha Keogh  
*School of Nursing, Faculty of Health, Queensland University of Technology, Australia*
- 1005** **The Effect of Mobile Health Education on Knowledge, Self-Efficacy and Quality of Life among Patients with Stoma**  
Nor Saudah Abdul Latif<sup>1</sup>, **Mei Chan Chong**<sup>1</sup>, Foong Li Law<sup>2</sup>, Li Yoong Tang<sup>1</sup>, Wan Ling Lee<sup>1</sup>, Vimala Ramoo<sup>1</sup>  
<sup>1</sup>*Faculty of Medicine, University of Malaya, Malaysia*, <sup>2</sup>*Computing Department, School of Computing and Creative Media, University of Wollongong Malaysia KDU, Malaysia*
- 1006** **A Systematic Review of Spontaneous Breathing Trial to Enhance Liberation from Mechanical Ventilation in ICU Patients**  
**Hui Ying Ngai**<sup>1</sup>, Maggie Wai Ming Pun<sup>2</sup>  
<sup>1</sup>*Intensive Care Unit, Pamela Youde Nethersole Eastern Hospital, Hong Kong*, <sup>2</sup>*School of Nursing, LKS Faculty of Medicine, The University of Hong Kong, Hong Kong*
- 1007** **A Family-Management Intervention for Family Caregivers of Children with Autism in Vietnam: A Randomized Controlled Trial**  
**Thi Lan Anh Mai**, Nujjaree Chaimongkol, Thanh Tung Le, Tuan Anh Truong, Huy Hoang Ngo, Van Thanh Vu, Manh Dung Nguyen  
*Simulation Center, Nam Dinh University of Nursing, Vietnam*
- 1008** **The Effect of Very Low/low Protein Diet on Progression of Chronic Kidney Disease: A Meta-Analysis**  
**Shi Pu**, Yu Shi, Jun-Na Deng, Hong-Mei Peng, Xia Huang, Yang Li  
*Department of Nephrology, The Key Laboratory for the Prevention and Treatment of Chronic Kidney Disease of Chongqing, Kidney Center of PLA, Xinqiao Hospital, Army Medical University, China*
- 1009** **Kangaroo Care Intervention for Reducing Preterm Infant Pain: A Review**  
**Wing Yin Chan**, Maggie Mee Kie Chan  
*School of Nursing, LKS Faculty of Medicine, The University of Hong Kong, Hong Kong*

- 1010 Predictors of High Perceived Cognitive Difficulty among Individuals with Cancer**  
**Samantha J. Mayo**<sup>1,2</sup>, Kim Edelstein<sup>3,4</sup>, Eshetu G. Atenafu<sup>5</sup>, Rand Ajaj<sup>1</sup>, Lori Bernstein<sup>3,4</sup>  
<sup>1</sup>Lawrence S. Bloomberg Faculty of Nursing, University of Toronto, Canada, <sup>2</sup>Collaborative Academic Practice, Princess Margaret Cancer Centre, Canada, <sup>3</sup>Department of Supportive Care, Princess Margaret Cancer Centre, Canada, <sup>4</sup>Department of Psychiatry, University of Toronto, Canada, <sup>5</sup>Department of Biostatistics, Princess Margaret Cancer Centre, Canada
- 1011 Analysis of the Causes of Blockage of Three-Lumen Nutrition Tube by Gravity Drip After Operation of Esophageal Cancer**  
**Shuling Li**  
 Thoracic Surgery, Changzheng Hospital of Naval Medical University, China
- 1012 An Instructional Design on Flipped Classroom of Gynecology and Obstetrics Nursing Practice Teaching**  
**Shuang Li**, Lin Liu, Jun Ke  
 School of Nursing, Naval Medical University, China
- 1013 Reliability and Validity of the Chinese Version of the Fear of Birth Scale**  
**Yi Lou**<sup>1</sup>, Lixiang Gu<sup>1</sup>, Shengbin Guo<sup>2</sup>, Pingping Qiu<sup>1</sup>  
<sup>1</sup>School of Nursing, Fujian Medical University, China, <sup>2</sup>Department of Nursing, Fujian Maternity and Child Health Hospital, China
- 1014 Properties of Patient Reported Outcome Measures on Post Traumatic Stress Disease (PTSD) in North Korean Defectors: A Systematic Review**  
 Sang Hui Chu<sup>1,2</sup>, Kyoung-A Kim<sup>3</sup>, **Ocksim Kim**<sup>1</sup>  
<sup>1</sup>College of Nursing, Yonsei University, South Korea, <sup>2</sup>Mo-Im Kim Nursing Research Institute, College of Nursing, Yonsei University, South Korea, <sup>3</sup>Department of Nursing, Institute of Technology, South Korea
- 1015 The Effectiveness of Washing/filtration Strategies for Blood Primed Extracorporeal Life Support on Electrolytes and Clinical Outcomes in Pediatric Patients: A Systematic Review**  
**Gwen P. K. Leung**<sup>1,2</sup>, Cathy W. Y. Wong<sup>1</sup>, Polly W. C. Li<sup>1</sup>  
<sup>1</sup>School of Nursing, LKS Faculty of Medicine, The University of Hong Kong, Hong Kong, <sup>2</sup>Department of Cardiothoracic Surgery, Queen Mary Hospital, Hong Kong
- 1016 The Effects of Pump-Controlled Retrograde Trial Off in Patients with Venous-Arterial Extracorporeal Membrane Oxygenation: A Systematic Review**  
**Fung Ming Lau**, Polly W. C. Li  
 School of Nursing, LKS Faculty of Medicine, The University of Hong Kong, Hong Kong
- 1017 Development of Nutrition Support Nurse**  
**Gao Yang**<sup>1</sup>, Pan Hongying<sup>2</sup>  
<sup>1</sup>School of Medicine, Zhejiang University, China, <sup>2</sup>Sir Run Run Shaw Hospital, Zhejiang University School of Medicine, China
- 1018 The Forefoot and Toes are Common Sites for Hand-Foot Skin Reaction on the Sole: An Observational Study**  
**Yukie Tahara**<sup>1</sup>, Ayumi Amemiya<sup>1</sup>, Ryutaro Kase<sup>1</sup>, Yuka Kitagawa<sup>1</sup>, Sadahisa Ogasawara<sup>2</sup>, Yoshihiko Ooka<sup>2</sup>, Naoya Kato<sup>2</sup>, Masatoshi Komiyama<sup>1</sup>  
<sup>1</sup>Department of Nursing Physiology, Graduate School of Nursing, Chiba University, Japan, <sup>2</sup>Department of Gastroenterology, Graduate School of Medicine, Chiba University, Japan

- 1019 Transition to Telehealth: Response to the COVID-19 Pandemic**  
**Lauren Diegel-Vacek**, Karen Cotler, Virginia Reising, Susan Corbridge  
*College of Nursing, University of Illinois at Chicago, the United States*
- 1020 Exploring the Smoking-Related Perceptions, Attitude, and Behavior among Smokers of South Asian Ethnic Minority Immigration in Hong Kong: A Qualitative Study**  
**Tingna Liang**, William Ho Cheung Li, Wei Xia  
*School of Nursing, LKS Faculty of Medicine, The University of Hong Kong, Hong Kong*
- 1021 Scoping Review of Physical Restraint Minimization Interventions in Intensive Care Units**  
**Ziad Alostaz<sup>1</sup>**, Louise Rose<sup>2</sup>, Sangeeta Mehta<sup>3,4</sup>, Linda Johnston<sup>1</sup>, Craig Dale<sup>1</sup>  
<sup>1</sup>*Lawrence S. Bloomberg Faculty of Nursing, University of Toronto, Canada,* <sup>2</sup>*Florence Nightingale Faculty of Nursing, Midwifery and Palliative Care, King's College, the United Kingdom,* <sup>3</sup>*Department of Medicine, University of Toronto, Canada,* <sup>4</sup>*Division of Critical Care, Mount Sinai Hospital, Canada*
- 1022 Nursing Leadership in a Transcatheter Aortic Valve Replacement (TAVR) Program**  
**Hector Jose**  
*Division of Cardiology, Jesse Brown Veterans Administration Medical Center, the United States*
- 1023 A Comparative Study on the Validity of MEWS, MEOWS and MEWC**  
**Rongrong Han<sup>1</sup>**, Hongying Pan<sup>2</sup>  
<sup>1</sup>*Medical College, Huzhou University, China,* <sup>2</sup>*Nursing Department, Sir Run Run Shaw Hospital, Zhejiang University School of Medicine, China*
- 1024 A Narrative Review on the Effects of Polyethylene Cover as a Closed Moisture Chamber in Preventing Ocular Surface Disorders in Mechanically Ventilated Adult Patients in the Intensive Care Unit**  
**Tanuja Rai**, Mandy Ho  
*School of Nursing, LKS Faculty of Medicine, The University of Hong Kong, Hong Kong*
- 1025 Nurse-Led Intervention for Homeless Adults with Latent TB**  
**Adey Nyamathi<sup>1</sup>**, Kartik Yadav<sup>1</sup>, Benissa E. Salem<sup>2</sup>, Sanghyuk Shin<sup>1</sup>, Kathryn White<sup>3</sup>, Alicia H. Chang<sup>4</sup>, Don Morisky<sup>2</sup>  
<sup>1</sup>*Sue & Bill Gross School of Nursing, University of California, Irvine, the United States,* <sup>2</sup>*UCLA School of Nursing, University of California, Los Angeles, the United States,* <sup>3</sup>*Clinic, Los Angeles Christian Center, the United States,* <sup>4</sup>*TB Control Program, County of Los Angeles Public Health, the United States*
- 1026 Effectiveness of Topical Oxygen Therapy in Wound Healing of Patients with Diabetic Foot Ulcer**  
**Marvin Queg**, Josehine De Leon  
*Graduate School, Centro Escolar University, the Philippines*
- 1027 Significance of Home Visiting in Providing Care to Filipino Mothers and Their Infants during the Postpartum Period**  
**Floreliz Ngaya-an<sup>1</sup>**, Ryan De Torres<sup>1</sup>, Lourdes Marie Tejero<sup>1</sup>, Dula Pacquiao<sup>2,3</sup>  
<sup>1</sup>*College of Nursing, University of the Philippines, the Philippines,* <sup>2</sup>*Nursing, Rutgers University, the United States,* <sup>3</sup>*School of Nursing, University of Hawaii, the United States*

- 1028 Relationship of Subjective and Objective Sleep Measures with Physical Performance in Patients with Advanced Lung Cancer**  
**Naomi Takemura**<sup>1</sup>, Denise Shuk Ting Cheung<sup>1</sup>, Daniel Yee Tak Fong<sup>1</sup>, Anne Wing Mui Lee<sup>2</sup>, Tai Chung Lam<sup>2</sup>, James Chung Man Ho<sup>3</sup>, Tsz Yeung Kam<sup>4</sup>, Jeannie Yin Kwan Chik<sup>5</sup>, Chia-Chin Lin<sup>1</sup>  
<sup>1</sup>School of Nursing, LKS Faculty of Medicine, The University of Hong Kong, Hong Kong, <sup>2</sup>Department of Clinical Oncology, LKS Faculty of Medicine, The University of Hong Kong, Hong Kong, <sup>3</sup>Department of Medicine, LKS Faculty of Medicine, The University of Hong Kong, Hong Kong, <sup>4</sup>Department of Clinical Oncology, Pamela Youde Nethersole Eastern Hospital, Hong Kong, <sup>5</sup>Department of Clinical Oncology, Queen Elizabeth Hospital, Hong Kong
- 1029 Hand and Foot Exercises for Diabetic Peripheral Neuropathy: A Randomized Controlled Trial**  
**Mi Mi Thet Mon Win**<sup>1,2</sup>, Kiyoko Fukai<sup>2</sup>, Htwe Htwe Nyunt<sup>3</sup>, Khaing Zaw Linn<sup>1</sup>  
<sup>1</sup>Department of Fundamental Nursing, University of Nursing, Yangon, Myanmar, <sup>2</sup>Graduate School of Health Sciences, Okayama University, Japan, <sup>3</sup>Department of Adult Health Nursing, University of Nursing, Yangon, Myanmar
- 1030 Knowledge, Attitude and Practice of Nurses towards Palliative Care**  
**Mi Kyaw**  
 Adult Health Nursing, University of Nursing, Myanmar
- 1031 Factors Influencing Community Health Nursing Services Provided by Nurses in Community Settings**  
**Aye Thida Htwe**  
 Department of Public Health, Ministry of Health and Sports, Myanmar
- 1032 Effect of Cold Application Combined with Distraction on Venipuncture Pain among Children**  
**Wai Hnin Phyu**<sup>1</sup>, Myo Myo Aye<sup>2</sup>, Hninn Ei Phyu<sup>2</sup>  
<sup>1</sup>Yangon Children Hospital, Yangon Children Hospital, Myanmar, <sup>2</sup>Maternal and Child Health Nursing Department, University of Nursing Yangon, Myanmar
- 1033 Effect of Sensory Stimulation on Cognitive Function in Head Injury Patients**  
**Khin Soe Moe Win**, Lwe Say Paw Hla, Yee Mon Nyo  
 Adult Health Nursing, University of Nursing, Myanmar
- 1034 The Lived Experiences of Clients with Epilepsy: A Phenomenological Approach**  
**Zar Zar Nyein**  
 Mental Health Nursing, University of Nursing, Myanmar
- 1035 Career Growth and Professional Commitment among Nurses**  
**Lwin Zar Myo**  
 Fundamental Nursing Department, University of Nursing, Yangon, Myanmar
- 1036 Advance Directive in Gerontology: Evolving Nursing Roles in Transforming Global Health**  
**Yuen Chun Samantha Chong**<sup>1,3</sup>, Shuk Tze Lucy Chung<sup>2</sup>  
<sup>1</sup>HKU Health System, The University of Hong Kong, Hong Kong, <sup>2</sup>Hong Kong Academy of Nursing, Hong Kong, <sup>3</sup>Hong Kong Nursing & Health Care Management, Hong Kong

# Poster Presentations

## Patient-Centred Care

- 2001**     **Using Social Media to Disseminate Effective Pain Treatments for Newborns during Needle-Related Painful Procedures in China**  
Jiale Hu<sup>1,2</sup>, Feng Xue<sup>3</sup>, Yiyao Zhou<sup>1</sup>, Yuxiao Liu<sup>4,5</sup>, Qingge Li<sup>6</sup>, Jun Deng<sup>7</sup>, **Denise Harrison**<sup>1,8</sup>  
*<sup>1</sup>School of Nursing, University of Ottawa, Canada, <sup>2</sup>Nurse Anesthesia, Virginia Commonwealth University, the United States, <sup>3</sup>Neonatal Intensive Care, Shanghai Children's Medical Center, China, <sup>4</sup>School of Nursing, Shanghai University of Medicine and Health Sciences, China, <sup>5</sup>School of Nursing, Shanghai Jiaotong University, China, <sup>6</sup>School of Nursing, Zhejiang University, China, <sup>7</sup>School of Nursing, Peking University, China, <sup>8</sup>Department of Nursing, University of Melbourne, Australia*
- 2002**     **Current Trend of Advance Care Planning in People with Dementia: An Integrative Review**  
**Yujin Suh**<sup>1</sup>, Ju Hee Lee<sup>1,2</sup>  
*<sup>1</sup>College of Nursing, Yonsei University, South Korea, <sup>2</sup>Mo-Im Kim Nursing Institute, College of Nursing, Yonsei University, South Korea*
- 2003**     **Effect of Newborn Individualized Developmental Care and Assessment Program (NIDCAP) on Preterm Infants: A Scoping Review**  
**Moe Okuzaki**  
*School of Nursing, Chiba University, Japan*
- 2005**     **Typology of Family Relationships, Psychological Distress and Quality of Life in Chinese Patients with Advanced Lung Cancer: A Latent Profile Analysis**  
**Jieling Chen**<sup>1</sup>, Jingfen Zhu<sup>2</sup>, Hong Jian<sup>3</sup>, Yi Zhao<sup>3</sup>, Shanshan He<sup>4</sup>, Yaping He<sup>4</sup>  
*<sup>1</sup>School of Nursing, Sun Yat-Sen University, China, <sup>2</sup>School of Public Health, Shanghai Jiao Tong University School of Medicine, China, <sup>3</sup>Department of Oncology, Shanghai Chest Hospital, China, <sup>4</sup>School of Social Development, East China Normal University, China*
- 2006**     **The Correlation among Anxiety and Depression, Personality Traits and Resilience in Patients with Stroke**  
**Ping Xu**  
*School of Nursing, Zhejiang University, China*
- 2007**     **A New Assessment Tool for Predicting Mortality and Adverse Events in Patients with Sepsis and Septic Shock**  
**Yi-Chin Chu**<sup>1</sup>, Yi Liu<sup>2</sup>  
*<sup>1</sup>Department of Nursing, Kaohsiung Medical University Hospital, Kaohsiung Medical University, Taiwan, <sup>2</sup>College of Nursing, Kaohsiung Medical University, Taiwan*
- 2008**     **How Acceptance and Commitment Therapy (ACT) Helps Improving "Subjective Health" of Persons with Chronic Pain: A Scoping Review**  
**Rika Matsumoto**  
*School of Nursing, Chiba University, Japan*

- 2009**     **The Effectiveness of Eye Movement Desensitization and Reprocessing toward Anxiety Disorder: a Meta-Analysis of Randomized Controlled Trials**  
**Ninik Yunitri**<sup>1,2</sup>, Kuei-Ru Chou<sup>1,3</sup>, Ching-Chiu Kao<sup>1,4</sup>, Hsin Chu<sup>5,6</sup>, Voss Joachim<sup>7</sup>, Huei-Ling Chiu<sup>8</sup>, Doresses Liu<sup>1,4</sup>, Shu-Tai Shen Hsiao<sup>1,9</sup>, Pi-Chen Chang<sup>1</sup>, Linda Xiao<sup>1,10</sup>  
<sup>1</sup>School of Nursing, College of Nursing, Taipei Medical University, Taiwan, <sup>2</sup>Mental Health and Psychiatric Nursing Department, Faculty of Nursing, Universitas Muhammadiyah Jakarta, Indonesia, <sup>3</sup>Psychiatric Research Center, Taipei Medical University Hospital, Taiwan, <sup>4</sup>Department of Nursing, Wan Fang Hospital, Taipei Medical University, Taiwan, <sup>5</sup>Institute of Aerospace and Undersea Medicine, School of Medicine, National Defense Medical Center, Taiwan, <sup>6</sup>Department of Neurology, Tri-Service General Hospital, National Defense Medical Center, Taiwan, <sup>7</sup>Sarah Cole Hirsh Center for Evidence-Based Practice, Frances Payne Bolton School of Nursing, Case Western Reserve University, the United States, <sup>8</sup>School of Gerontology Health Management, College of Nursing, Taipei Medical University, Taiwan, <sup>9</sup>Department of Nursing, Taipei Medical University Hospital, Taiwan, <sup>10</sup>School of Nursing, University of Pennsylvania, the United States
- 2010**     **Nurse-Led Transitional Management Program for Chronic Heart Failure Older Adults: A Review**  
**Pak Hin Wong**, Maggie Mee Kie Chan  
School of Nursing, LKS Faculty of Medicine, The University of Hong Kong, Hong Kong
- 2011**     **Investigation on Cognition of Standardized Training Nurses on Inpatient Privacy Related Knowledge**  
**Wu Ying**  
Medical Center, Changzheng Hospital of Naval Medical University, China
- 2012**     **Nurse-Patient Rapport and Videoconference Telehealth Visits with Persons with Cancer: A Literature Review**  
**Paula Koppel**, Jennie De Gagne  
School of Nursing, Duke University, the United States
- 2013**     **Factors Related to Functional Status among Persons with Liver Cirrhosis: A Meta-Analysis**  
**Surachai Maninet**, Yupin Aunguroch, Chanokporn Jitpanya  
Faculty of Nursing, Chulalongkorn University, Thailand
- 2014**     **Comprehensive Metabolic Status and All-Cause Analysis of Blood Glucose Control in Patients with Type 2 Diabetes Mellitus**  
**Fuhua Huang**, Wenzhuan Chen  
Department of Nursing, Shantou University Medical College, China
- 2015**     **Creation of a Nursing Network to Promote Equity in Healthcare for the Deaf**  
**Kyveli Zografaki**, Panayota Sourtzi, Athina Kalokairinou, Venetia-Sofia Velonaki  
Faculty of Nursing, National and Kapodistrian University of Athens, Greece
- 2016**     **Factors Associated with the Decision Making of Renal Replacement Therapy in Patients with End-Stage Kidney Disease (ESKD): A Systematic Review and Qualitative Meta-Synthesis**  
**Yu Shi**<sup>1</sup>, Shi Pu<sup>2</sup>, Mei Ha<sup>1</sup>, Yu Luo<sup>1</sup>  
<sup>1</sup>School of Nursing, Army Medical University, China, <sup>2</sup>Department of Nephrology, The Key Laboratory for the Prevention and Treatment of Chronic Kidney Disease of Chongqing, Kidney Center of PLA, Xinqiao Hospital, Army Medical University, China



- 2017**     **Suffering and Attitudes toward Death of Heart Failure Patients from Acute Exacerbation to Early Post Discharge**  
**Asahiko Higashitsuji**, Madoka Matsudo, Tomoko Majima  
*Graduate School of Nursing, Chiba University, Japan*
- 2018**     **A Scoping Review of the Literature in Subcutaneous Low-Molecular Weight Heparin Injection Duration on Bruising Formation and Pain Intensity for In-Hospitalization Patients**  
**Yu Kiu Lau**, Cecilia Kong, Gladys Hui  
*School of Nursing, LKS Faculty of Medicine, The University of Hong Kong, Hong Kong*
- 2019**     **Factors Associated with Quality of Life in Patients with Non-Muscle Invasive Bladder Cancer in South Korea**  
Jeongok Park<sup>1,2</sup>, **Kyoungjin Lee**<sup>1,2</sup>, Miae Seo<sup>1</sup>  
<sup>1</sup>College of Nursing, Yonsei University, South Korea, <sup>2</sup>Mo-Im Kim Nursing Research Institute, College of Nursing, Yonsei University, South Korea
- 2020**     **A Literature Review of Spiritual Care Practices by Nurses on General Wards—Focusing on the Situations and Processes, and the Difficulties and Challenges in Practice**  
**Kyoka Ikuta**<sup>1</sup>, Ariko Noji<sup>1,2</sup>, Atuko Genda<sup>2,3</sup>  
<sup>1</sup>School of Nursing, Chiba University, Japan, <sup>2</sup>Graduate School of Nursing, Chiba University, Japan, <sup>3</sup>Nursing Department, Japanese Red Cross Medical Center, Japan
- 2021**     **A Structural Equation Modeling Approach to Understanding Physical Function of Terminal Cancer Patients**  
**Han-Gyo Choi**<sup>1</sup>, Myung Ah Lee<sup>2</sup>, Jeong-Ran Ra<sup>3</sup>, Hye-Ah Yeom<sup>1</sup>  
<sup>1</sup>College of Nursing, The Catholic University of Korea, South Korea, <sup>2</sup>Division of Medical Oncology, Department of Internal Medicine, Cancer Research Institute, Seoul St. Mary's Hospital, College of Medicine, The Catholic University of Korea, South Korea, <sup>3</sup>Hospice & Palliative Care Team, Seoul St. Mary's Hospital, The Catholic University of Korea, South Korea
- 2022**     **Association between Sleep Patterns and Behavioral and Psychological Symptoms among Korean Older Adults with Dementia**  
Eunhee Cho<sup>1</sup>, Byoung Seok Ye<sup>2</sup>, Sujin Kim<sup>3</sup>, Sinwoo Hwang<sup>4</sup>, Eunji Kwon<sup>4</sup>, Seok-Jae Heo<sup>5</sup>, Hyangkyu Lee<sup>1</sup>, Jinhee Shin<sup>3</sup>, **Bada Kang**<sup>1</sup>  
<sup>1</sup>Mo-Im Kim Nursing Research Institute, College of Nursing, Yonsei University, South Korea, <sup>2</sup>College of Medicine, Yonsei University, South Korea, <sup>3</sup>College of Nursing, Yonsei University, South Korea, <sup>4</sup>Korea Armed Forces Nursing Academy, South Korea, <sup>5</sup>Department of Biostatistics and Computing, Graduate School, Yonsei University South Korea
- 2023**     **Comparative Effectiveness of Rehabilitative Management Therapies on Post-Stroke Dysphagia Complications: A Frequentist Network Meta-Analysis**  
**Kondwani Joseph Banda**, Kuei-Ru Chou  
*College of Nursing, Taipei Medical University, Taiwan*
- 2024**     **Why do Family Members of Emergency Terminal Patients Make Do-Not-Resuscitate (DNR) Decisions in Mainland China: A Qualitative Exploration**  
**Chuanqi Ding**<sup>1</sup>, Jingfen Jin<sup>1</sup>, Yuwei Wang<sup>2</sup>, Minfei Yang<sup>2</sup>, Sa Wang<sup>2</sup>  
<sup>1</sup>Department of Nursing, The Second Affiliated Hospital, School of Medicine, Zhejiang University, China, <sup>2</sup>Department of Emergency Medicine, The Second Affiliated Hospital, School of Medicine, Zhejiang University, China

- 2025** **Patients' Satisfaction with Taking Care of Nurses at Namdinh General Hospital**  
**Nguyen Thi Thanh Huong**<sup>1</sup>, Do Thi Hoa<sup>1</sup>, Pham Thi Hong Nhung<sup>2</sup>, Dinh Thi Thu Huyen<sup>1</sup>  
<sup>1</sup>Nursing and Midwifery Faculty, Nam Dinh University of Nursing, Vietnam, <sup>2</sup>Nursing Department, Namdinh General Hospital, Vietnam
- 2026** **Meta-Analysis Quality Evaluation of Nursing Home Studies: Overview and Suggestions for the Future**  
**Juh Hyun Shin**<sup>1</sup>, In Soo Shin<sup>2</sup>, Dong Eun Jang<sup>3</sup>, Jiyeon Lee<sup>1</sup>  
<sup>1</sup>College of Nursing, Ewha Womans University, South Korea, <sup>2</sup>Transdisciplinary Security, Dongguk University, South Korea, <sup>3</sup>College of Nursing, The University of Texas at Austin, the United States
- 2027** **Patient Experiences of Cognitive Impairment after Cancer Treatment**  
**Arta Taghavi Haghayegh**<sup>1,2</sup>, Samantha Mayo<sup>1,3</sup>  
<sup>1</sup>Nursing and Supportive Care, University Health Network - Princess Margaret Cancer Centre, Canada, <sup>2</sup>Department of Psychology, University of Toronto, Canada, <sup>3</sup>Lawrence S. Bloomberg Faculty of Nursing, University of Toronto, Canada
- 2028** **Evaluating Complex Post-Traumatic Stress Disorder Measurement Tools Using the COSMIN Methodology: A Systematic Review**  
**Kyoung-A Kim**<sup>1</sup>, Ock-Sim Kim<sup>2</sup>, Sang Hui Chu<sup>2,3</sup>  
<sup>1</sup>Nursing Department, Yeosu Institute of Technology, South Korea, <sup>2</sup>College of Nursing, Yonsei University, South Korea, <sup>3</sup>Mo-Im Kim Nursing Research Institute, College of Nursing, Yonsei University, South Korea
- 2029** **Facilitating Evidence-Based Nursing and Person-Centered Health Care Through Professional Development in the Galapagos**  
**Betty Martinez**<sup>1</sup>, Alasia Ledford<sup>1</sup>, Julee Waldrop<sup>1</sup>, Gwen Sherwood<sup>1</sup>, Johanna Jahnke<sup>2</sup>  
<sup>1</sup>School of Nursing, The University of North Carolina at Chapel Hill, the United States, <sup>2</sup>Department of Anthropology, The University of North Carolina at Chapel Hill, the United States
- 2030** **Association between Grip Strength and Sleep Duration among Middle-Aged and Older Adults: A Systematic Review**  
**Anastasia Pana**<sup>1,2</sup>, Panayota Sourtzi<sup>1,2</sup>, Athena Kalokairinou<sup>1</sup>, Aggeliki Giannouli<sup>3</sup>, Venetia-Sofia Velonaki<sup>1,2</sup>  
<sup>1</sup>Faculty of Nursing, National and Kapodistrian University of Athens, Greece, <sup>2</sup>Hellenic Association of Gerontology and Geriatrics, HAGG, Greece, <sup>3</sup>Asklepieio Voulas, General Hospital, Greece
- 2031** **Barriers to and Facilitators for the Use of Communication Strategies for Adults with an Advanced Airway in the Intensive Care Unit: A Scoping Review**  
**Laura Istanbulian**<sup>1</sup>, Louise Rose<sup>2</sup>, Yana Yunusova<sup>3</sup>, Franklin Gorospe<sup>1</sup>, Craig Dale<sup>1</sup>  
<sup>1</sup>Lawrence S. Bloomberg Faculty of Nursing, University of Toronto, Canada, <sup>2</sup>Florence Nightingale Faculty of Nursing, Midwifery & Palliative Care, King's College London, the United Kingdom, <sup>3</sup>Speech Language Pathology, University of Toronto, Canada
- 2032** **Mapping the Biopsychosocial Factors of Pain for Patients with Advanced Liver Disease: A Scoping Review Study**  
**Franklin Gorospe**<sup>1,2</sup>, Laura Istanbulian<sup>1,3</sup>, Martine Puts<sup>1</sup>, David Wong<sup>4</sup>, Elizabeth Lee<sup>4</sup>, Craig Dale<sup>1,5</sup>  
<sup>1</sup>Lawrence S. Bloomberg Faculty of Nursing, University of Toronto, Canada, <sup>2</sup>Perioperative Services, Toronto General Hospital–University Health Network, Canada, <sup>3</sup>Acute Inpatient Respiratory Unit, Michael Garron Hospital, Toronto East Health Network, Canada, <sup>4</sup>Hepatology Division, Toronto General Hospital–University Health Network, Canada, <sup>5</sup>Department of Critical Care, Sunnybrook Health Sciences Centre, Canada

- 2033**     **Sex Differences in Cancer-Related Cognitive Difficulties in Hematological Cancers: A Narrative Review of an Area of Needed Research**  
**Rand Ajaj**<sup>1</sup>, Samantha Mayo<sup>1,2</sup>  
*<sup>1</sup>Lawrence S. Bloomberg Faculty of Nursing, University of Toronto, Canada, <sup>2</sup>Princess Margaret Cancer Centre, Canada*
- 2034**     **Factors Affecting Glycated Hemoglobin of Type 2 Diabetes Mellitus Patients: A Cross-Sectional Study**  
**Soomin Hong**<sup>1</sup>, Yesol Kim<sup>1</sup>, Mona Choi<sup>2</sup>  
*<sup>1</sup>College of Nursing, Yonsei University, South Korea, <sup>2</sup>Mo-Im Kim Nursing Research Institute, College of Nursing, Yonsei University, South Korea*
- 2035**     **Supporting the Childbearing Family: An Interdisciplinary Service-Learning Course**  
**Rhonda Lanning**  
*School of Nursing, University of North Carolina at Chapel Hill, the United States*
- 2036**     **A Narrative Review on the Effects of Nurse-Led Lifestyle Interventions for Improving Quality of Life in Breast Cancer Survivors**  
**Chuncui Su**, Mandy Ho  
*School of Nursing, LKS Faculty of Medicine, The University of Hong Kong, Hong Kong*
- 2037**     **Effect of Pre-Operative Respiratory Therapy on Pulmonary Functions of Coronary Artery Bypass Graft Surgery Patients**  
**Zar Zar Thant**<sup>1</sup>, Lwe Say Paw Hla<sup>2</sup>, Phone Myint<sup>3</sup>  
*<sup>1</sup>Adult Health Nursing, University of Nursing, Myanmar, <sup>2</sup>Fundamental Health Nursing, University of Nursing, Myanmar, <sup>3</sup>Department of Anesthesiology, University of Medicine, Myanmar*
- 2038**     **Nurses' Perspectives on Pain Management Practices during Newborn Blood Sampling in China**  
**Jiale Hu**<sup>1</sup>, Wendy Gifford<sup>2</sup>, Yiyang Zhou<sup>2</sup>, Qing Zhang<sup>3</sup>, Denise Harrison<sup>4</sup>  
*<sup>1</sup>Department of Nurse Anesthesia, Virginia Commonwealth University, the United States, <sup>2</sup>School of Nursing, University of Ottawa, Canada, <sup>3</sup>School of Nursing, Hunan University of Medicine, China, <sup>4</sup>Department of Nursing, The University of Melbourne, Australia*

## Poster Presentations

### Health Promotion and Disease Prevention

- 3001** **NT-proBNP and Renal Decline in Patients with Hypertension**  
**Chiraporn Tachaudomdach**<sup>1</sup>, Thanyarat Jomkaew<sup>2</sup>, Duangruedee Lasuka<sup>1</sup>  
*<sup>1</sup>Faculty of Nursing, Chiang Mai University, Thailand, <sup>2</sup>Faculty of Medical Science, Chiang Mai University, Thailand*
- 3002** **Factors Predicting Prolonged Postoperative Ileus in Patients Undergoing Major Gastrointestinal Surgery**  
**Chutiporn Banyong**<sup>1</sup>, Wallada Chanruangvanich<sup>1</sup>, Orapan Thosingha<sup>1</sup>, Varut Lohsiriwat<sup>2</sup>  
*<sup>1</sup>Faculty of Nursing, Mahidol University, Thailand, <sup>2</sup>Faculty of Medicine Siriraj Hospital, Mahidol University, Thailand*
- 3005** **Physical Exercise Training Interventions for Childhood Cancer Survivors: A Systematic Review**  
**Ankie Tan Cheung**<sup>1</sup>, William Ho Cheung Li<sup>1</sup>, Laurie Long Kwan Ho<sup>1</sup>, Godfrey Chi Fung Chan<sup>2</sup>  
*<sup>1</sup>School of Nursing, LKS Faculty of Medicine, The University of Hong Kong, Hong Kong, <sup>2</sup>Department of Paediatrics & Adolescent Medicine, LKS Faculty of Medicine, The University of Hong Kong, Hong Kong*
- 3006** **Factors Affecting Disability for Older Adults with Osteoarthritis: The Moderated Mediating Effect of Frailty by Physical Resilience**  
**Jungah Park**<sup>1</sup>, Juhee Lee<sup>1</sup>, Hyangkyu Lee<sup>1</sup>, Chang Oh Kim<sup>2</sup>, Chang Gi Park<sup>3</sup>  
*<sup>1</sup>Mo-Im Kim Nursing Research Institute, College of Nursing, Yonsei University, South Korea, <sup>2</sup>Division of Geriatrics, Department of Internal Medicine, College of Medicine, Yonsei University, South Korea, <sup>3</sup>College of Nursing, University of Illinois, the United States*
- 3007** **Factors Associated with Premenstrual Syndrome among Female College Students of East Asia**  
Jeongok Park<sup>1,2</sup>, **Hyojin Lee**<sup>1,2</sup>, So Mi Park<sup>3</sup>, Jay Jung Jae Lee<sup>4</sup>  
*<sup>1</sup>College of Nursing, Yonsei University, South Korea, <sup>2</sup>Mo-Im Kim Nursing Research Institute, Yonsei University, South Korea, <sup>3</sup>Department of Nursing, Wonju College of Medicine, Yonsei University, South Korea, <sup>4</sup>School of Nursing, LKS Faculty of Medicine, The University of Hong Kong, Hong Kong*
- 3008** **A Systematic Review on the Effect of Delayed Cord Clamping on Improving Iron Deficiency among Term Newborns**  
**Cindy Lee**, Maggie Wai Ming Pun  
*School of Nursing, LKS Faculty of Medicine, The University of Hong Kong, Hong Kong*
- 3009** **Systematic Review of the Effectiveness of Prenatal Psychoeducation Intervention on Reducing Fear of Childbirth**  
**Tsz Ki Poon**, Maggie Wai Ming Pun  
*School of Nursing, LKS Faculty of Medicine, The University of Hong Kong, Hong Kong*
- 3010** **Sexual Coercion and Condom Use: A Moderated Mediation Model of Condom Negotiation and Sexual Orientation in Young Women**  
**Wen Zhang**, Janet Yuen Ha Wong, Edmond Pui Hang Choi, Daniel Yee Tak Fong  
*School of Nursing, LKS Faculty of Medicine, The University of Hong Kong, Hong Kong*
- 3011** **Risk Factors and Clinical Outcomes of Delirium after Hip Fracture Surgery in Korean Older Adults: A Retrospective Study**  
**Kyeong-Yae Sohng**, Eun-Jeong Jeon  
*College of Nursing, The Catholic University of Korea, South Korea*

- 3012 Relationship between Daily Life Conditions and Sleep Characteristics of Older People in a Long-Term Care Facility**  
**Lu Zhou**<sup>1</sup>, Sayuri Suwa<sup>1</sup>, Kazuko Obayashi<sup>2</sup>, Shigeru Masuyama<sup>3</sup>  
<sup>1</sup>Division of Visiting Nursing, Graduate School of Nursing, Chiba University, Japan, <sup>2</sup>Faculty of Healthcare Management, Nihon Fukushi University, Japan, <sup>3</sup>Traveller's Medical Center, Tokyo Medical University Hospital, Japan
- 3013 Challenges and Coping Strategies of Family Caregivers for Women Diagnosed with Advanced Breast Cancer**  
**Grace Kusi**<sup>1,2</sup>, Adwoa Bemah Boamah Mensah<sup>2</sup>, Prabdeep Panesar<sup>1</sup>, Samantha Mayo<sup>1</sup>  
<sup>1</sup>Lawrence S. Bloomberg Faculty of Nursing, University of Toronto, Canada, <sup>2</sup>Department of Nursing, Kwame Nkrumah University of Science and Technology, Ghana
- 3014 Correlation between Family Functioning and Health Behaviors of Hypertensive Ischemic Stroke Patients: A Longitudinal Study**  
**Xiao Wang**<sup>1</sup>, Hengfang Ruan<sup>2</sup>, Zhen Wu<sup>2</sup>, Jingjing Li<sup>1</sup>, Mengyao Wang<sup>1</sup>, Mengjie Shen<sup>1</sup>, Lihong Wan<sup>1</sup>  
<sup>1</sup>School of Nursing, Sun Yat-Sen University, China, <sup>2</sup>Department of Neurology, The Third Affiliated Hospital of Sun Yat-Sen University, China
- 3015 The Relationship between Frailty and Multimorbidity in Chinese Middle-Aged and Older Age Diabetes Patients.**  
**Qianyu He**, Yanru Li, Yarui Wang, Li Cheng  
 School of Nursing, Sun Yat-Sen University, China
- 3016 Factors Influencing Perceived Health Status of Elderly Living Alone in Korea**  
**Mi-So Shim**, Gwang Suk Kim, Minkyung Park, Youngin Kim  
 Mo-Im Kim Nursing Research Institute, College of Nursing, Yonsei University, South Korea
- 3017 The Mediating Role of Fatigue in the Relationship between Self-Efficacy and Physical Activity among Chinese Kidney Transplant Recipients**  
**Hong Chen**<sup>1,2</sup>, Ting Yu<sup>3</sup>, Huiqing Wu<sup>4</sup>, Qiquan Sun<sup>4</sup>, Ailing Hu<sup>1,3</sup>  
<sup>1</sup>School of Nursing, Sun Yat-Sen University, China, <sup>2</sup>School of Nursing, LKS Faculty of Medicine, The University of Hong Kong, Hong Kong, <sup>3</sup>Department of Nursing, The Third Affiliated Hospital of Sun Yat-Sen University, China, <sup>4</sup>Department of Renal Transplantation, The Third Affiliated Hospital of Sun Yat-Sen University, China
- 3018 Nurses' Knowledge, Attitude, and Practice in the Assessment of Post-Stroke Depressive Symptoms A Cross-Sectional Study**  
**Lili Liao**, Irene Su  
 Department of Nursing, Shantou University Medical College, China
- 3019 Development of a Suicide Prevention Program for Secondary School Students in Nakhon Phanom Province, Thailand: A Situational Analysis Study**  
**Surachai Chaniang**, Parichart Meuangkhwa, Kamonnat Klongdee  
 Mental Health and Psychiatric Nursing, Borrommarajjonn College of Nursing, Nakhon Phanom, Nakhon Phanom University, Thailand
- 3020 An Investigation of the Characteristics of Frailty among Elderly Residents of Nursing Homes and Its Correlation with Sleep Quality**  
**Wen-Yan Liu**, Wei-Wei Wu  
 School of Nursing, Fujian Medical University, China

- 3021 Development of a Conceptual Framework for Older Adults with Cognitive Frailty: A Systematic Review**  
Tae Wha Lee<sup>1</sup>, **Yoonjung Ji**<sup>1</sup>, Eunkyung Kim<sup>2</sup>  
<sup>1</sup>Mo-Im Kim Nursing Research Institute, College of Nursing, Yonsei University, South Korea, <sup>2</sup>College of Nursing, Yonsei University, South Korea
- 3022 Posttraumatic Growth is Not Associated with Physical Health but Psychological, Social, and Environment Health among North Korean Defectors**  
**Mi-Kyung Lee**<sup>1</sup>, Ocksim Kim<sup>2</sup>, Kyoung-A Kim<sup>3</sup>, Sang Hui Chu<sup>1,2</sup>  
<sup>1</sup>Mo-Im Kim Nursing Research Institute, College of Nursing, Yonsei University, South Korea, <sup>2</sup>Department of Clinical Nursing Science, College of Nursing, Yonsei University, South Korea, <sup>3</sup>Technology Department of Nursing, Yeosu Institute, South Korea
- 3023 Predicting Factors of Preschooler's Parental Feeding Behaviors, Urban Thailand**  
**Chollada Jongsomjitt**, Waraporn Chaiyawat, Branom Rodcumdee  
Faculty of Nursing, Chulalongkorn University, Thailand
- 3024 Association between the Use of Heated Tobacco Products and Cigarette Cessation Outcomes among Youth: A Prospective Cohort Study**  
**Wei Xia**, William Ho Cheung Li  
School of Nursing, LKS Faculty of Medicine, The University of Hong Kong, Hong Kong
- 3025 Factors Related to Migraine among Women: The Korea Nurses' Health Study**  
**Hyunju Dan**<sup>1</sup>, Oksoo Kim<sup>1</sup>, Kwang-Pil Ko<sup>2</sup>, Heeja Jung<sup>3</sup>, Yanghee Pang<sup>1</sup>, Jung A. Choi<sup>1</sup>  
<sup>1</sup>College of Nursing, Ewha Womans University, South Korea, <sup>2</sup>College of Medicine, Gachon University, South Korea, <sup>3</sup>College of Nursing, Konyang University, South Korea
- 3026 The Effect of Allergic Rhinitis on Sleep Disturbance and Fatigue in Female Nurses: The Korea Nurses' Health Study**  
**Bohye Kim**<sup>1</sup>, Oksoo Kim<sup>1</sup>, Heeja Jung<sup>2</sup>, Hyunju Dan<sup>1</sup>, Yanghee Pang<sup>1</sup>  
<sup>1</sup>College of Nursing, Ewha Womans University, South Korea, <sup>2</sup>College of Nursing, Konyang University, South Korea
- 3027 A Causal Model of Sexual Abstinence in Thai Female Adolescents**  
**La-Ongdao Wannarit**, Waraporn Chaiyawat, Jintana Yunibhand  
Faculty of Nursing, Chulalongkorn University, Thailand
- 3028 Health Belief Structural Equation Model Predicting Health Promotion Lifestyle in Dementia Prevention of Chinese Adults**  
**Hua Li**, Yanni Yang  
School of Nursing, Army Medical University, China
- 3029 Needs for App-Based Exercise Interventions of the Elderly Patients with Peripheral Arterial Disease: A Qualitative Content Analysis**  
**Mihui Kim**, Yesol Kim, Gi Wook Ryu, Yong Sook Yang, Mona Choi  
College of Nursing, Yonsei University, South Korea

- 3030 Community Empowerment towards a Healthy and Child-Friendly City Based on Local Wisdom**  
 Yeni Rustina<sup>1</sup>, Dessie Wanda<sup>1</sup>, Agus Setiawan<sup>1</sup>, Enie Novieastari<sup>1</sup>, Ella Nurlela Hadi<sup>2</sup>, Jajang Gunawijaya<sup>3</sup>, Herlily Herlily<sup>4</sup>, **Annida Falahaini**<sup>1</sup>  
<sup>1</sup>Faculty of Nursing, Universitas Indonesia, Indonesia, <sup>2</sup>Faculty of Public Health, Universitas Indonesia, Indonesia, <sup>3</sup>Faculty of Social and Political Sciences, Universitas Indonesia, Indonesia, <sup>4</sup>Faculty of Engineering, Universitas Indonesia, Indonesia
- 3031 Effectiveness of Mobile Health Exercise Interventions for Patients with Peripheral Arterial Disease: A Systematic Review and Meta-Analysis**  
**Mihui Kim**<sup>1</sup>, Changhwan Kim<sup>2</sup>, Eunkyo Kim<sup>1</sup>, Mona Choi<sup>1</sup>  
<sup>1</sup>College of Nursing, Yonsei University, South Korea, <sup>2</sup>Department of Critical Care Nursing, Samsung Medical Center, South Korea
- 3032 Risk Factors of Hypertensive Disorders in Pregnancy among Pregnant Women in Four Central Hospitals in Vientiane Capital, Lao PDR**  
**Somphane Sysavath**<sup>1</sup>, Nilubon Rujiraprasert<sup>2</sup>, Souksavanh Phanpaseuth<sup>1</sup>, Anousone Sisoulath<sup>1</sup>, Chansy Phomphithak<sup>3</sup>  
<sup>1</sup>Faculty of Nursing Sciences, University of Health Sciences, Laos, <sup>2</sup>Faculty of Nursing, Khon Kean University, Thailand, <sup>3</sup>Child Nursing, College of Health Sciences, Laos
- 3033 eHealth Antenatal Coparenting Intervention to Prevent Postpartum Depression among Primiparous Women, Karachi, Pakistan: A Pilot Randomized Controlled Trial**  
**Salima Sulaiman**<sup>1</sup>, Cindy-Lee Dennis<sup>1</sup>, Linda Johnston<sup>1</sup>, Jennifer Abbas-Dick<sup>2</sup>  
<sup>1</sup>Lawrence S. Bloomberg Faculty of Nursing, University of Toronto, Canada, <sup>2</sup>Faculty of Health Science, University of Ontario Institute of Technology, Canada
- 3034 Psychometric Properties of the Caregiver Contribution to Self-Care Chronic Illness Inventory in China: A Cross-Sectional Study**  
**Dandan Chen**, Zhihong Ye, Hui Zhang  
 Sir Run Run Shaw Hospital, Zhejiang University School of Medicine, China
- 3035 Modifiable Lifestyle Factors, Lifestyle Patterns and Multimorbidity: A Cross-Sectional Study in the Context of Community-Dwellings in Mainland China**  
**Jing Shao**, Zhihong Ye  
 School of Nursing, Zhejiang University, China
- 3036 Relationships of Social Support, Health-Promoting Lifestyles, Glycemic Control, and Bone Turnover among Adults with Type 2 Diabetes**  
**Mei Ha**, Yu Luo  
 School of Nursing, Army Medical University, China
- 3037 The Effect of Donor Human Milk on the Length of Hospital Stay in Very-Low-Birth-Weight Infants: A Systematic Review and Meta-Analysis**  
**Rui Yang**<sup>1,2</sup>, Danqi Chen<sup>1,2</sup>, Qingqi Deng<sup>3</sup>, Xinfen Xu<sup>2</sup>  
<sup>1</sup>School of Nursing, Faculty of Medicine, Zhejiang University, China, <sup>2</sup>Women's Hospital, School of Medicine, Zhejiang University, China, <sup>3</sup>Nursing College, Zhejiang Chinese Medical University, China



- 3038 Synergistic Effect of Physical Activity with Low Neutrophil-Lymphocyte Ratio on Anxiety in Type 2 Diabetes Mellitus in Indonesia: A Community-Based Cross Sectional Study**  
**Yohanes Andy Rias**<sup>1</sup>, Hsiu-Ting Tsai<sup>1,2</sup>  
<sup>1</sup>College of Nursing, Taipei Medical University, Taiwan, <sup>2</sup>Post-Baccalaureate Program in Nursing, College of Nursing, Taipei Medical University, Taiwan
- 3039 Development and Internal Validation of a Prognostic Model for 4 Year – Risk of Metabolic Syndrome in Adults: A Retrospective Cohort Study**  
**Hui Zhang**, Zhihong Ye  
 School of Nursing, Faculty of Medicine, Zhejiang University, China
- 3040 Self-Efficacy and Its Influencing Factors of Breast Cancer Screening for Female College Students in China**  
**Tingting Xie**<sup>1,2</sup>, Weijia Sun<sup>2</sup>, Dandan Chen<sup>2</sup>, Na Liu<sup>2</sup>, Xinbo Wang<sup>2</sup>, Wei Zhang<sup>2</sup>  
<sup>1</sup>School of Nursing, Sun Yat-Sen University, China, <sup>2</sup>School of Nursing, Jilin University, China
- 3041 Stigma, Self-Efficacy, and Late Toxicities among Nasopharyngeal Carcinoma Survivors in China: A Cross-Sectional Study**  
**Ximei Chen**, Lu Shao  
 Sun Yat-Sen University, China
- 3042 Effects of an Expressive Writing Intervention in Chinese Women Undergoing Pregnancy Termination for Foetal Abnormality: A Randomized Controlled Trial**  
**Jialu Qian**<sup>1,2</sup>, Xiaoyan Yu<sup>2</sup>  
<sup>1</sup>School of Medicine, Zhejiang University, China, <sup>2</sup>Department of Obstetrics and Gynecology, Women's Hospital School of Medicine, Zhejiang University, China
- 3043 Adherence to Antiretroviral Therapy and Treatment Hub Visits of Persons Living with HIV**  
**Ryan De Torres**, Floreliz Ngaya-an, Josefina Tuazon  
 College of Nursing, University of the Philippines Manila, the Philippines
- 3044 Preventing Surgical Site Infection Using Operating Room Bundle of Care in Patients Undergoing Elective Exploratory Laparotomy Cholecystctomy Surgery**  
**Erika Leslie Magat**, Josephine De Leon  
 Graduate School, Centro Escolar University, the Philippines
- 3046 Empowering Families for Quality Early Childhood**  
**Jutamas Chotibang**<sup>1</sup>, Patcharee Woragidpoonpol<sup>1</sup>, Nethong Namprom<sup>1</sup>, Decha Tamdee<sup>1</sup>, Juthatip Chalermphol<sup>2</sup>  
<sup>1</sup>Faculty of Nursing, Chiang Mai University, Thailand, <sup>2</sup>Faculty of Agriculture, Chiang Mai University, Thailand
- 3047 Effect of Supporting Exercise Intervention on Physical Activity among Nursing Students**  
**Shwe Yee Win**, Ohn Khin Khin, Min Htike Aung  
 Community Health Nursing Department, University of Nursing, Myanmar

# Poster Presentations

## Health Care Systems and Policy

- 4001 Co-Design of a Communication Tool for Residents and Families in Long-Term Care**  
**Lisa Cranley**<sup>1</sup>, Gajan Sivakumaran<sup>2</sup>, Shoshana Helfenbaum<sup>3</sup>, Daniel Galessiere<sup>3</sup>, Raquel Meyer<sup>3</sup>, Wendy Duggleby<sup>4</sup>, Linda McGillis Hall<sup>1</sup>, Katherine McGilton<sup>1,5</sup>  
*<sup>1</sup>Lawrence S. Bloomberg Faculty of Nursing, University of Toronto, Canada, <sup>2</sup>Leslie Dan Faculty of Pharmacy, University of Toronto, Canada, <sup>3</sup>Ontario Centres for Learning, Research and Innovation in Long-Term Care, Baycrest, Canada, <sup>4</sup>Faculty of Nursing, University of Alberta, Canada, <sup>5</sup>Toronto Rehabilitation Institute, University Health Network, Canada*
- 4002 Life-Sustaining Treatment Decision in Korea Based on Analysis of Electronic Health Record**  
**Arum Lim**<sup>1</sup>, Hyoeun Jang<sup>1,2</sup>, Sanghee Kim<sup>2,3</sup>  
*<sup>1</sup>Department of Nursing, Yonsei University, South Korea, <sup>2</sup>Mo-Im Kim Nursing Research Institute, College of Nursing, Yonsei University, South Korea, <sup>3</sup>College of Nursing, Yonsei University, South Korea*
- 4003 Preparations of Inactive Nurses to Return to Nursing: A Qualitative Study**  
**Mamiko Ueda**<sup>1</sup>, Toshiko Nakayama<sup>1</sup>, Naomi Funashima<sup>2</sup>  
*<sup>1</sup>Graduate School of Nursing, Chiba University, Japan, <sup>2</sup>School of Nursing, Niigata College of Nursing, Japan*
- 4004 Evaluation of Health Facilities Users' Opinion Regarding Accessibility to the National Health Care System of Greece: A Qualitative Study**  
**Panagiotis Alexopoulos**<sup>1</sup>, Konstantinos Birbas<sup>1</sup>, Vassiliki Benetou<sup>2</sup>, Georgios Manomenidis<sup>3</sup>, Thalia Bellalli<sup>3</sup>, Daphne Kaitelidou<sup>1</sup>  
*<sup>1</sup>Faculty of Nursing, National and Kapodistrian University of Athens, Greece, <sup>2</sup>School of Medicine, National and Kapodistrian University of Athens, Greece, <sup>3</sup>Department of Nursing, International Hellenic University, Greece*
- 4005 Analysis of Current Situation and Influencing Factors of the Willingness among the Elderly with Chronic Diseases to Participate in the Time Bank Mutual Care Mode in the Community**  
**Xiaoxue Chen**, Mandy Ho  
*School of Nursing, LKS Faculty of Medicine, The University of Hong Kong, Hong Kong*
- 4006 Hospitalisations for Heart Failure and Chronic Obstructive Pulmonary Disease in Queensland and New South Wales 2011-2017**  
**Fitriani Fitriani**<sup>1</sup>, Shirley Chambers<sup>2,3</sup>, Gursharan Singh<sup>2,3</sup>  
*<sup>1</sup>School of Nursing, Queensland University of Technology, Australia, <sup>2</sup>Centre for Healthcare Transformation, Faculty of Health, Queensland University of Technology, Australia, <sup>3</sup>Cancer and Palliative Care Outcomes Centre, School of Nursing, Queensland University of Technology, Australia*
- 4007 Family Quality of Life and Parental Self-Efficacy among Parents of Children with Autism Spectrum Disorder are Mediated by Social Support**  
**Yongshen Feng**<sup>1</sup>, Xuezhen Zhou<sup>2</sup>, Xiuqun Qin<sup>3</sup>, Lifeng Zhang<sup>1</sup>  
*<sup>1</sup>School of Nursing, Sun Yat-Sen University, China, <sup>2</sup>Nursing Department, Sun Yat-Sen Memorial Hospital, China, <sup>3</sup>Pediatric Department, The Third Affiliated Hospital of Sun Yat-Sen University, China*
- 4008 Design and Implementation of Continuous Quality Improvement Training Program Based on FOCUS-PDCA Program**  
**Yihong Xu**<sup>1,2</sup>, Hongying Pan<sup>1,2</sup>, Rongrong Zhang<sup>2</sup>  
*<sup>1</sup>School of Nursing, Zhejiang University, China, <sup>2</sup>Nursing Department, Sir Run Run Shaw Hospital, Zhejiang University School of Medicine, China*

- 4009 Description and Evaluation of the AACN Synergy Model for Patient Care Employing the Critique Frameworks**  
**Soyun Hong**, Eunkyung Kim  
*College of Nursing, Yonsei University, South Korea*
- 4011 A Systematic Review: Effectiveness of Interventions to De-Escalate Workplace Violence against Nurses in Healthcare Settings**  
**Rozina Somani**<sup>1,2</sup>, Carles Muntaner<sup>1,2</sup>, Edith Hillan<sup>1</sup>, Alisa Velonis<sup>3</sup>, Peter Smith<sup>2</sup>  
<sup>1</sup>Lawrence S. Bloomberg Faculty of Nursing, University of Toronto, Canada, <sup>2</sup>Dalla Lana School of Public Health, University of Toronto, Canada, <sup>3</sup>Division of Community Health Sciences, University of Illinois, the United States
- 4012 Factors Influencing Missed Nursing Care from Malaysian Nurses' Perspective: A Cross Sectional Study**  
 Sri Theyshaini Nahasaram, **Vimala Ramoo**, Wan Ling Lee  
*Department of Nursing Science, University of Malaya, Malaysia*
- 4013 Protocol for the Adaptation of the Clinical Practice Guideline for Management of Physical Restraints in Critically Ill Patients**  
**Nianqi Cui**<sup>1</sup>, Yuping Zhang<sup>1</sup>, Yuanfei Liu<sup>1</sup>, Yingfeng Zhou<sup>2</sup>, Hong Sun<sup>3,4</sup>, Jingfen Jin<sup>1</sup>  
<sup>1</sup>Department of Nursing, The Second Affiliated Hospital, School of Medicine, Zhejiang University, China, <sup>2</sup>School of Nursing, Fudan University, China, <sup>3</sup>Nursing Department, Peking Union Medical College Hospital, China, <sup>4</sup>Nursing Department, Chinese Academy of Medicine Sciences, China
- 4014 Determining the Required Skill Mix to Deliver Primary Health Care Services across Various Rural and Urban Communities: Implications to Public Health Nursing Practice**  
**Luz Barbara Dones**<sup>1</sup>, Peter James Abad<sup>1</sup>, Vicente Medina<sup>2</sup>, Anthony Cordero<sup>3</sup>  
<sup>1</sup>College of Nursing, University of the Philippines Manila, the Philippines, <sup>2</sup>College of Dentistry, University of the Philippines Manila, the Philippines, <sup>3</sup>College of Medicine, University of the Philippines Manila, the Philippines
- 4015 Nurses' Perception towards Work Environment and Nurse-Sensitive Patient Outcomes**  
**Lae Mon Mon**<sup>1</sup>, Myint Htay<sup>2</sup>  
<sup>1</sup>Teaching, Nursing and Midwifery Training School, Myanmar, <sup>2</sup>Fundamental Nursing Department, University of Nursing, Myanmar
- 4016 Validating the Implementation Leadership Scale in the Chinese Nursing Context**  
**Jiale Hu**<sup>1</sup>, Wendy Gifford<sup>2</sup>, Hong Ruan<sup>3</sup>, Denise Harrison<sup>4</sup>, Qingge Li<sup>5</sup>, Mark Ehrhart<sup>6</sup>, Mary-Ann Harrison<sup>7</sup>, Nick Barrowman<sup>7</sup>, Gregory Arons<sup>8</sup>  
<sup>1</sup>Department of Nurse Anesthesia, Virginia Commonwealth University, the United States, <sup>2</sup>School of Nursing, University of Ottawa, Canada, <sup>3</sup>Integrated Administration Department, Shanghai Ninth People's Hospital, China, <sup>4</sup>Department of Nursing, The University of Melbourne, Australia, <sup>5</sup>Nursing Department, Women's Hospital Affiliated to School of Medicine Zhejiang University, China, <sup>6</sup>Department of Psychology, University of Central Florida, the United States, <sup>7</sup>Research Institute, Children's Hospital of Eastern Ontario, Canada, <sup>8</sup>Department of Psychiatry, University of California, the United States
- 4017 Influence of Role Conflict and Role Ambiguity on Occupational Stress among Nurses**  
**San Shwe Tin**, Kyin Khant Neam, Tin Mar Wai  
*Fundamental Nursing Department, University of Nursing, Myanmar*

**4018 Relationship between Work Environment and Intention to Leave among Newly Posted Nurses**

**Thida Wai**<sup>1</sup>, Khin Cho<sup>2</sup>, Khaing Mon<sup>2</sup>

<sup>1</sup>Central Midwifery Training School, Central Midwifery Training School, Myanmar, <sup>2</sup>University of Nursing, Myanmar

**4019 Prevalence of Psychiatric Disorders and Predictors of Involuntary Admission under the New Mental Health Order (MHO) 2014 in Brunei**

**Agong Lupat**<sup>1</sup>, Munikumar Ramasamy Venkatasalu<sup>1</sup>, Hilda Ho<sup>2</sup>, Hanif Abdul Rahman<sup>1</sup>

<sup>1</sup>PAPRSB Institute of Health Sciences, Universiti Brunei Darussalam, Brunei, <sup>2</sup>Raja Isteri Pengiran Anak Saleha Hospital, Ministry of Health, Brunei Darussalam, Brunei

## Poster Presentations

### Information and Communication Technology

- 5001** **Factor Analysis Affecting Online Communication to Healthcare Professionals in COVID-19 Pandemic**  
**Ariko Noji**<sup>1</sup>, Hisako Fujita<sup>1</sup>, Daisuke Sumitani<sup>1</sup>, Tetsuo Narita<sup>2</sup>  
*<sup>1</sup>Graduate School of Nursing, Chiba University, Japan, <sup>2</sup>Research, HealthCare Innovation 21 Association, Japan*
- 5002** **Measurement of Digital Literacy among Older Adults: A Systematic Review**  
**Sarah Oh**<sup>1</sup>, Kyoung A Kim<sup>2</sup>, Minsoo Kim<sup>3</sup>, Jaewook Oh<sup>3</sup>, Sang Hui Chu<sup>1,3</sup>, JiYeon Choi<sup>1,3</sup>  
*<sup>1</sup>Mo-Im Kim Nursing Research Institute, College of Nursing, Yonsei University, South Korea, <sup>2</sup>College of Nursing, Yeosu Institute of Technology, South Korea, <sup>3</sup>College of Nursing, Yonsei University, South Korea*
- 5003** **Feasibility and Usability of a Mobile SMART Exercise Support Program to Reduce Fatigue in Advanced Lung Cancer Patients – A Single Group Pilot Trial**  
**Agnes Yuen Kwan Lai**<sup>1</sup>, Denise Yee Shan Yiu<sup>2</sup>, David Chi Leung Lam<sup>3</sup>, Chia Chin Lin<sup>1</sup>, Mary Sau Man Ip<sup>3</sup>, Tai Hing Lam<sup>2</sup>  
*<sup>1</sup>School of Nursing, LKS Faculty of Medicine, The University of Hong Kong, Hong Kong, <sup>2</sup>School of Public Health, LKS Faculty of Medicine, The University of Hong Kong, Hong Kong, <sup>3</sup>Department of Medicine, LKS Faculty of Medicine, The University of Hong Kong, Hong Kong*
- 5004** **The Digital Intervention of Enhancing HPV Vaccine for Parents of Adolescents: A Systematic Review and Meta-Analysis**  
**Tingxuan Wang**, Janet Yuen Ha Wong, Daniel Yee Tak Fong  
*School of Nursing, LKS Faculty of Medicine, The University of Hong Kong, Hong Kong*
- 5005** **Nurses' Perception towards and Satisfaction with Electronic Medical Record (EMR) System in a Teaching Hospital**  
Nur 'Athiah Kamaruddin, **Wan Nor Fatimah Wan Nawawi**, Vimala Ramoo, Mei Chan Chong  
*Department of Nursing Science, University of Malaya, Malaysia*
- 5006** **The Effectiveness of COPD Management Program via Smartphone Applications on Clinical Status in Patients with Chronic Obstructive Pulmonary Disease**  
**Jinsuta Tadsuan**, Doungrut Wattanakitkrileart, Sarinrut Sriprasong  
*Department of Medical Nursing, Faculty of Nursing, Mahidol University, Thailand*
- 5007** **A Picture is Worth a Thousand Words: Utilisation of Flipcharts as a Learning Tool for an Undergraduate Clinical Nursing Unit**  
Jay Balante, Dion Candelaria, Dawn Perez, **Fung Koo**  
*Susan Wakil School of Nursing and Midwifery, The University of Sydney, Australia*
- 5008** **Immersive Virtual Reality Intervention to Mitigate Venipuncture-Inflicted Pain in Pediatric Patients: A Systematic Review**  
**Timothy Chung Ming Wu**<sup>1</sup>, Veronica Suk Fan Lam<sup>2</sup>  
*<sup>1</sup>School of Nursing and Health Studies, The Open University of Hong Kong, Hong Kong, <sup>2</sup>School of Nursing, LKS Faculty of Medicine, The University of Hong Kong, Hong Kong*
- 5009** **The Social and Psychosocial Effects of Exergaming among Long-Term Care Residents**  
Charlene Chu<sup>1</sup>, Amanda Quan<sup>2</sup>, Allison Souter<sup>3</sup>, **Amanda Yee**<sup>4</sup>, Renee Biss<sup>5</sup>  
*<sup>1</sup>Lawrence S. Bloomberg Faculty of Nursing, University of Toronto, Canada, <sup>2</sup>Dalla Lana School of Public Health, University of Toronto, Canada, <sup>3</sup>Faculty of Arts and Science, Queen's University, Canada, <sup>4</sup>Faculty of Arts and Science, University of Toronto, Canada, <sup>5</sup>Department of Psychology, University of Windsor, Canada*

- 5010 The Social Image of Nursing: Mapping Its Historical Media Dissemination**  
**Hildegart González**<sup>1,2</sup>, Begoña Errasti-Ibarrondo<sup>2,3</sup>, Ana Choperena<sup>2,3</sup>  
<sup>1</sup>Department of Community Nursing, School of Nursing, University of Navarra, Spain, <sup>2</sup>IdiSNA, Navarra Institute for Health Research, Spain, <sup>3</sup>Department of Adult Nursing Care, School of Nursing, University of Navarra, Spain
- 5011 Nursing Students on Twitter during COVID-19**  
**Jennie C. De Gagne**<sup>1</sup>, Eunji Cho<sup>2</sup>, Hyeyoung K. Park<sup>3</sup>, Jeehae D. Nam<sup>4</sup>, Dukyoo Jung<sup>5</sup>, Sharron Rushton<sup>1</sup>  
<sup>1</sup>School of Nursing, Duke University, the United States, <sup>2</sup>School of Nursing, Vanderbilt University, the United States, <sup>3</sup>College of Nursing, University of Massachusetts, the United States, <sup>4</sup>Graduate School and the Duke Global Health Institute, Duke University, the United States, <sup>5</sup>College of Nursing, Ewha Womans University, South Korea
- 5012 E-Health Literacy & E-Health Readiness among Patients with Diabetes, Hypertension and Cardiovascular Disease**  
**Wan Ling Lee**, Zi Jing Lim, Mei Chan Chong, Li Yoong Tang, Vimala Ramoo  
 Department of Nursing Science, Faculty of Medicine, University of Malaya, Malaysia
- 5013 The Application of Intelligent Health Management in Gynecological Cancer Patients in the Information Era**  
**Runna Miao**, Wei Gu, Lu Zhang, Lihong Zhang  
 Health Science Center, Xi'an Jiaotong University, China
- 5014 Mobile Meal Assistance Program in Long-Term Care Facilities in South Korea**  
**Dukyoo Jung**<sup>1</sup>, Jennie De Gagne<sup>2</sup>, Minkyung Lee<sup>3</sup>, Hyesoon Lee<sup>1</sup>, Kyuri Lee<sup>1</sup>, Eunju Choi<sup>1</sup>, Juyoun Chung<sup>4</sup>  
<sup>1</sup>College of Nursing, Ewha Wonams University, South Korea, <sup>2</sup>School of Nursing, Duke University, the United States, <sup>3</sup>Infectious Disease, Weill Cornell Medicine, the United States, <sup>4</sup>Department of Comics and Animation Technology, Sejong University, South Korea
- 5015 What is Known about Providing Medical Information to Older Adults in an Online Environment: A Systematic Review of the Literature**  
**Valentina Donison**<sup>1</sup>, Bianca McLean<sup>2</sup>, Nazia Hossain<sup>3</sup>, Mikaela Gray<sup>4</sup>, Sara Durban<sup>5</sup>, Kristen Haase<sup>6</sup>, Shabbir Alibhai<sup>7</sup>, Martine Puts<sup>1</sup>  
<sup>1</sup>Lawrence S. Bloomberg Faculty of Nursing, University of Toronto, Canada, <sup>2</sup>Michael G. DeGroot School of Medicine, McMaster University, Canada, <sup>3</sup>Department of Internal Medicine, University of Toronto and University Health Network, Canada, <sup>4</sup>Gerstein Science Information Centre, University of Toronto, Canada, <sup>5</sup>Research, University Health Network, Canada, <sup>6</sup>School of Nursing, University of British Columbia, Canada, <sup>7</sup>Department of Medicine, Institute for Health Policy, Management and Evaluation, University of Toronto and University Health Network, Canada
- 5016 Technology Acceptance of E-Health Solutions among Public Health Care Workers in the Philippines**  
**Bettina Evio**, Sheila Bonito  
 College of Nursing, University of the Philippines Manila, the Philippines

# Poster Presentations

## Professional Education

- 6001** **Facemask Wearing among Chinese International Students from Hong Kong Studying in UK Universities during COVID-19: Public Attitudes, Personal Belief, Stress and Stressors**  
**Shirley Man Man Sit**<sup>1</sup>, Agnes Yuen Kwan Lai<sup>2</sup>, Theresa Tze Kwan Lai<sup>3</sup>, Cecila Hoi Mei Kong<sup>2</sup>, Jessica Yuet Ying Cheuk<sup>2</sup>, Man Ping Wang<sup>2</sup>, Yibin Feng<sup>4</sup>, Mary Sau Man Ip<sup>5</sup>, Tai Hing Lam<sup>1</sup>  
<sup>1</sup>School of Public Health, LKS Faculty of Medicine, The University of Hong Kong, Hong Kong, <sup>2</sup>School of Nursing, LKS Faculty of Medicine, The University of Hong Kong, Hong Kong, <sup>3</sup>School of Health Sciences, Caritas Institute of Higher Education, Hong Kong, <sup>4</sup>School of Chinese Medicine, LKS Faculty of Medicine, The University of Hong Kong, Hong Kong, <sup>5</sup>Department of Medicine, LKS Faculty of Medicine, The University of Hong Kong, Hong Kong
- 6002** **Web-Based Seminar as an Effective Way of Learning including Interactive Experiences in COVID-19 Pandemic (Part1)**  
**Hisako Fujita**<sup>1</sup>, Ariko Noji<sup>1</sup>, Daisuke Sumitani<sup>1</sup>, Sachiko Iijima<sup>2</sup>, Mari Kondo<sup>3</sup>, Sayaka Kotera<sup>4</sup>, Akiko Mizobe<sup>5</sup>, Koji Kobayashi<sup>6</sup>, Yoshiko Hamasaki<sup>7</sup>, Eiko Ootomo<sup>8</sup>, Akiko Nosaki<sup>1</sup>  
<sup>1</sup>Graduate School of Nursing, Chiba University, Japan, <sup>2</sup>Graduate School of Health Care and Nursing, Juntendo University, Japan, <sup>3</sup>Faculty of Nursing, Kansai Medical University, Japan, <sup>4</sup>Graduate School of Health Sciences, Kobe University, Japan, <sup>5</sup>Department of Nursing, Seinan Jo Gakuin University, Japan, <sup>6</sup>Japanese Nursing Association, Public Interest Corporations, Japan, <sup>7</sup>Takeda Hospital, Koseikai, Japan, <sup>8</sup>Nursing Department, The University of Tokyo Hospital, Japan
- 6003** **Web-Based Seminar as an Effective Way of Learning including Interactive Experiences in COVID-19 Pandemic (Part2)**  
**Daisuke Sumitani**<sup>1</sup>, Hisako Fujita<sup>1</sup>, Ariko Noji<sup>1</sup>, Sachiko Iijima<sup>2</sup>, Mari Kondo<sup>3</sup>, Sayaka Kotera<sup>4</sup>, Akiko Mizobe<sup>5</sup>, Koji Kobayashi<sup>6</sup>, Yoshiko Hamasaki<sup>7</sup>, Eiko Ootomo<sup>8</sup>, Akiko Nosaki<sup>1</sup>  
<sup>1</sup>Graduate School of Nursing, Chiba University, Japan, <sup>2</sup>Graduate School of Health Care and Nursing, Juntendo University, Japan, <sup>3</sup>Faculty of Nursing, Kansai Medical University, Japan, <sup>4</sup>Graduate School of Health Sciences, Kobe University, Japan, <sup>5</sup>Department of Nursing, Seinan Jo Gakuin University, Japan, <sup>6</sup>Japanese Nursing Association, Public Interest Corporation, Japan, <sup>7</sup>Takeda Hospital, Koseikai, Japan, <sup>8</sup>Nursing Department, The University of Tokyo Hospital, Japan
- 6004** **Learning Needs of Perioperative Nurses in Japan from the Viewpoint Work Position -toward Developing Continuing Professional Education Programs**  
**Shiori Sato**<sup>1</sup>, Toshiko Nakayama<sup>2</sup>  
<sup>1</sup>Doctoral Course, Graduate School of Chiba University, Japan, <sup>2</sup>Nursing Education, Chiba University, Japan
- 6005** **Practice of SBAR Communication Combined with Mini-CEX Evaluation in Clinical Teaching of Critically Ill Specialist Nurses**  
**Shuling Li**  
Thoracic Surgery, Changzheng Hospital of Naval Medical University, China
- 6006** **Relationship between Alexithymia and Autonomous Learning Competencies in Nursing Undergraduates: Mediating Effect of Mobile Phone Dependence**  
**Miaolan Guo**, Miaoxuan Chen, Yuebao Fu, Zhiju Yuan, Jieli Wang, Jing Su  
Department of Nursing, Shantou University Medical College, China



- 6007 The Association between Nursing Students' Knowledge and Attitudes on Self-Efficacy to Care for Older Adults in Acute Care Settings in Ghana**  
**Diana Abudu-Birresborn**<sup>1</sup>, Sarah Brennenstuhl<sup>1</sup>, Martine Puts<sup>1</sup>, Lynn McCleary<sup>2</sup>, Vida Yakong<sup>3</sup>, Diana Abudu-Birresborn<sup>1</sup>  
<sup>1</sup>Lawrence S. Bloomberg Faculty of Nursing, University of Toronto, Canada, <sup>2</sup>Department of Nursing, Brock University, Canada, <sup>3</sup>School of Allied Health Sciences, University for Development Studies, Ghana
- 6008 Critical Thinking of Students in Nursing Diploma Program, the Lao People's Democratic Republic**  
**Eungkham Syhalath**  
 Faculty of Nursing Sciences, University of Health Sciences, Laos
- 6009 The Effect of Self-Regulating Learning Combined with Digital Learning on Students' Performance in Critical Care Nursing**  
**Yi Liu**  
 College of Nursing, Kaohsiung Medical University, Taiwan
- 6010 The Investigation and Analysis of the Core Competence Status of 580 Nurses in Blood Purification Center in Shanghai**  
**Chen Jing**, Liu Lingling, Wang Ren, Jie Yanqing  
 Hemodialysis Center, Changzheng Hospital of Naval Medical University, China
- 6011 The Scale, Structure and Distribution of Initial Nursing Education in China: A National Data Analysis**  
**Xue Fu**<sup>1</sup>, Liming You<sup>1</sup>, Jiali Liu<sup>2</sup>, Jing Zheng<sup>3</sup>, Ke Liu<sup>1</sup>  
<sup>1</sup>School of Nursing, Sun Yat-Sen University, China, <sup>2</sup>Department of Nursing, Sun Yat-Sen University Cancer Center, China, <sup>3</sup>School of Nursing, Guangdong Pharmaceutical University, China
- 6012 Reliability and Validity of the Chinese Version of the Life Engagement Test in Medical Students**  
 Xin Gao<sup>1</sup>, Xiaojia Huang<sup>1</sup>, **Jing Wu**<sup>2</sup>  
<sup>1</sup>School of Basic Medicine, Naval Medical University, China, <sup>2</sup>School of Nursing, Naval Medical University, China
- 6013 Knowledge and Attitude of Elder Abuse among University Students**  
 Najihah Awang, **Li Yoong Tang**, Mei Chan Chong, Wan Ling Lee  
 Department of Nursing Science, Faculty of Medicine, University of Malaya, Malaysia
- 6014 The Effect of High-Fidelity Simulation in Medical Nursing Based on the Jeffries Simulation Theory**  
**Peiyong Wang**<sup>1,2</sup>  
<sup>1</sup>College of Nursing, Fudan University, China, <sup>2</sup>School of Medicine, Zhejiang University, China
- 6015 Professional Stereotypes of Interprofessional Education among Medical, Pharmacy, Rehabilitation and Nursing Students**  
**Tuong T. K. Nguyen**, Linh T.K. Tran, Khoa D. Duong, Tuan D. Tran  
 Faculty of Nursing and Medical Technology, University of Medicine and Pharmacy at Ho Chi Minh City, Vietnam
- 6016 Nurses and Midwives Perceived Barriers and Facilitators to Self Directed Learning: Strategies to Overcome the Challenges**  
**Karpagam Chakkaravarthy**<sup>1,2</sup>, Glenn Hardakker<sup>3</sup>, Khadizah H. Abdul-Mumin<sup>1,4</sup>  
<sup>1</sup>PAPRSB Institute of Health Sciences, Universiti Brunei Darussalam, Brunei, <sup>2</sup>Jerudong Park Medical Centre, Universiti Brunei Darussalam, Brunei, <sup>3</sup>Centre for Lifelong Learning, Universiti Brunei Darussalam, Brunei, <sup>4</sup>School of Nursing and Midwifery, La Trobe University, Australia

## Poster Presentations

### Global Health Nursing

- 7001 Nurse-Led Instant Messaging Support for Preventing Smoking Relapse under the COVID-19 Pandemic: Study Protocol for a Pilot Randomised Controlled Trial**  
**Tzu Tsun Luk<sup>1</sup>**, Chi Ju Hsieh<sup>1</sup>, Ching Han Helen Chan<sup>2</sup>, Kin Sang Ho<sup>2</sup>, Wai Yin Patrick Fok<sup>2</sup>, Derek Yee Tak Cheung<sup>1</sup>, Tai Hing Lam<sup>3</sup>, Man Ping Wang<sup>1</sup>  
<sup>1</sup>School of Nursing, LKS Faculty of Medicine, The University of Hong Kong, Hong Kong, <sup>2</sup>Tung Wah Group of Hospitals Integrated Centre on Smoking Cessation, Hong Kong, <sup>3</sup>School of Public Health, LKS Faculty of Medicine, The University of Hong Kong, Hong Kong
- 7002 Fear of COVID-19 and Its Associations with Perceived Personal and Family Benefits and Harms in Hong Kong**  
**Shirley Man Man Sit<sup>1</sup>**, Agnes Yuen Kwan Lai<sup>2</sup>, Bonny Yee Man Wong<sup>1</sup>, Man Ping Wang<sup>2</sup>, Sai Yin Ho<sup>1</sup>, Tai Hing Lam<sup>1</sup>  
<sup>1</sup>School of Public Health, LKS Faculty of Medicine, The University of Hong Kong, Hong Kong, <sup>2</sup>School of Nursing, LKS Faculty of Medicine, The University of Hong Kong, Hong Kong
- 7003 Nursing Workload according to the Nursing Activities Score during Pandemic COVID-19: A Systematic Review**  
**Alexandra-Stavroula Nieri<sup>1</sup>**, Stavroula Ilia<sup>2,3</sup>, Filippa Nikolaou<sup>4</sup>, Daphne Kaitelidou<sup>5</sup>, Vasiliki Matziou<sup>5</sup>, Margarita Giannakopoulou<sup>1</sup>  
<sup>1</sup>Clinical Nursing Applications Laboratory, Department of Nursing, National and Kapodistrian University of Athens, Greece, <sup>2</sup>Pediatric Intensive Care Unit, University Hospital "Pagni", Greece, <sup>3</sup>Medical School, University of Crete, Greece, <sup>4</sup>Pediatric Intensive Care Unit, "Pan. & Aglaia Kyriakou" Children's Hospital, Greece, <sup>5</sup>Faculty of Nursing, National and Kapodistrian University of Athens, Greece
- 7004 Changes in Awareness and Use of Heated Tobacco Products in Current Smokers in Hong Kong, 2017-2019**  
**Ziqiu Guo<sup>1</sup>**, Yongda Wu<sup>1</sup>, Derek Yee Tak Cheung<sup>1</sup>, Sai Yin Ho<sup>2</sup>, Henry Tong<sup>3</sup>, Vienna Lai<sup>3</sup>, Tai Hing Lam<sup>2</sup>, Man Ping Wang<sup>1</sup>  
<sup>1</sup>School of Nursing, LKS Faculty of Medicine, The University of Hong Kong, Hong Kong, <sup>2</sup>School of Public Health, LKS Faculty of Medicine, The University of Hong Kong, Hong Kong, <sup>3</sup>Hong Kong Council on Smoking and Health, Hong Kong
- 7005 The Use of Nurse Practitioners for Remote COVID-19 Patient Monitoring**  
Janey Kottler<sup>1</sup>, **Kathryn Vanderzwan<sup>2</sup>**, Elisabeth Schreiber<sup>3</sup>, Kareni Larimer<sup>4</sup>  
<sup>1</sup>Department of Health Systems Science, University of Illinois at Chicago, the United States, <sup>2</sup>Biobehavioral Nursing Science, University of Illinois at Chicago, the United States, <sup>3</sup>Nursing, UI Health, the United States, <sup>4</sup>Director, Clinical Development, PhysiQ, the United States
- 7006 Ethical Decision-Making Competencies in Public Health Nursing Practice during Natural Disasters**  
**Seiko Iwase**  
Department of Life Innovation Nursing, Graduate School of Nursing, Chiba University, Japan
- 7007 Impact of COVID-19 on the Hong Kong Youth Quitline Service and Quitting Behaviours of Its Users**  
**Laurie Long Kwan Ho<sup>1</sup>**, William Ho Cheung Li<sup>1</sup>, Ankie Tan Cheung<sup>1</sup>, Wei Xia<sup>1</sup>, Man Ping Wang<sup>1</sup>, Derek Yee Tak Cheung<sup>1</sup>, Tai Hing Lam<sup>2</sup>  
<sup>1</sup>School of Nursing, LKS Faculty of Medicine, The University of Hong Kong, Hong Kong, <sup>2</sup>School of Public Health, LKS Faculty of Medicine, The University of Hong Kong, Hong Kong

- 7008** **Impact of Isolation for Older People as a Measure of Infection Control: A Scoping Review**  
**Mikako Kato**, David Casenove, Ikuko Sakai  
*School of Nursing, Chiba University, Japan*
- 7009** **Assessing the Need for Specialized Psychological Care for Nurses Working during the COVID-19 Epidemic in China: A Qualitative Study**  
**Limin Wang**, Caihong Lu  
*Tongji Medical Collage, Huazhong University of Science and Technology, China*
- 7010** **Effectiveness of Nurse-Led Multidisciplinary Care for Chronic Kidney Disease Stage 4-5 in Southwest China: A 5-Year Prospective Cohort Study**  
**Yu Shi**<sup>1</sup>, Shi Pu<sup>2</sup>, Mei Ha<sup>1</sup>, Yu Luo<sup>1</sup>  
<sup>1</sup>*School of Nursing, Army Medical University, China,* <sup>2</sup>*Department of Nephrology, The Key Laboratory for the Prevention and Treatment of Chronic Kidney Disease of Chongqing, Kidney Center of PLA, Xinqiao Hospital, Army Medical University, China*
- 7011** **Relation between Skin Troubles and Stress due to Nurses' Wearing of Personal Protective Equipment in Response to COVID-19**  
**Keiko Haraikawa**<sup>1,2</sup>, Ariko Noji<sup>1</sup>, Kiyomi Yoshinaga<sup>2</sup>  
<sup>1</sup>*Graduate School of Nursing, Chiba University, Japan,* <sup>2</sup>*Nursing Department, Tokyo Teishin Hospital, Japan*
- 7012** **Non-Local Medical Workers' Subjectively Perceived Family Support and Pressure: A Survey in Hubei during the COVID-19 Epidemic**  
**Yitong Yuan**<sup>1</sup>, Qin Shu<sup>1</sup>, Guangyun Hu<sup>1</sup>, Ying Li<sup>2</sup>, Jing Peng<sup>3</sup>, Ying Cao<sup>4</sup>, Li Wang<sup>4</sup>  
<sup>1</sup>*School of Nursing, Army Medical University, China,* <sup>2</sup>*The Third Affiliated Hospital, Army Medical University, China,* <sup>3</sup>*The Second Affiliated Hospital, Army Medical University, China,* <sup>4</sup>*The First Affiliated Hospital, Army Medical University, China*
- 7013** **The Impact of COVID-19 Pandemic on Health Status, Moral Distress and Levels of Empathy of Frontline Nurses: A Narrative Literature Review**  
**Maria Gamvrouli**<sup>1</sup>, Maria Karanikola<sup>2</sup>, Antonia Paschali<sup>1</sup>, Margarita Giannakopoulou<sup>1</sup>  
<sup>1</sup>*Faculty of Nursing, National and Kapodistrian University of Athens, Greece,* <sup>2</sup>*Department of Nursing, Cyprus University of Technology, Cyprus*
- 7014** **Global Scientific Research on Social Participation of Older People from 2000 to 2019: A Bibliometric Analysis**  
**Jingjing Fu**<sup>1</sup>, Zixiao Jiang<sup>2</sup>, Yan Hong<sup>1</sup>, Siqi Liu<sup>1</sup>, Dehui Kong<sup>1</sup>, Zhu Zhong<sup>1</sup>, Yu Luo<sup>1</sup>  
<sup>1</sup>*School of Nursing, Army Medical University, China,* <sup>2</sup>*College of Horticulture and Landscape Architecture, Southwest University, China*
- 7015** **Implications for Global Public Health Emergency: A Scoping Review and Unifying Framework of Military Nurse Managers' Competencies**  
**Huijuan Ma**, Theodora Nomusa Chihava, Jingjing Fu, Suofei Zhang, Lei Lei, Jing Tan, Li Lin, Yu Luo  
*School of Nursing, Army Medical University, China*
- 7016** **Analysis of the Altruistic Behavior of Nurses under COVID-19: A Qualitative Study**  
**Lei Lei**, Yu Xie, Chunmei Luo, Qin Xie, Fangjian Duan, Li Lin, Yu Luo  
*School of Nursing, Army Medical University, China*

- 7017 Implications for Global Public Health Emergency: A Systematic Review and Qualitative Meta-Synthesis of Military Nurses' Deployment Experiences**  
**Huijuan Ma**<sup>1</sup>, Jinyu Huang<sup>2</sup>, Yajie Deng<sup>1</sup>, Yue Zhang<sup>3</sup>, Fang Lu<sup>1</sup>, Yuhui Yang<sup>1</sup>, Yu Luo<sup>1</sup>  
<sup>1</sup>School of Nursing, Army Medical University, China, <sup>2</sup>Duff Medical Building, McGill University, Canada, <sup>3</sup>Department of Military Nursing, NCO School, Army Medical University, China
- 7018 The Synergic Effect of Systolic Blood Pressure and Uric Acid Increased the Risk Factor of Gout Arthritis in Indonesia: A Novel Application of Structural Equation Model Analysis**  
**Maria Dyah Kurniasari**<sup>1,2</sup>, Andrian Dolfriandra Huruta<sup>3,4</sup>, Hsiu Ting Tsai<sup>5</sup>  
<sup>1</sup>College of Nursing, Taipei Medical University, Taiwan, <sup>2</sup>Faculty of Medicine and Health Science, Universitas Kristen Satya Wacana, Indonesia, <sup>3</sup>Ph.D Program in Business, Chung Yuan Christian University, Taiwan, <sup>4</sup>Faculty of Economics and Business, Universitas Kristen Satya Wacana, Indonesia, <sup>5</sup>Post Baccalaureate Program in Nursing, College of Nursing, Taipei Medical University, Taiwan
- 7019 The Influence of Healthy Workplace on Health of Employees and Productivity among the Migrant Workers in Korea**  
**Su Jeong Lee**<sup>1</sup>, Tae Wha Lee<sup>2</sup>, Hyeon Kyeong Lee<sup>2</sup>, Sohee Park<sup>3</sup>, Hye Sun Jung<sup>4</sup>, Duck Hee Chae<sup>5</sup>  
<sup>1</sup>Department of Nursing, Hyejeon College, South Korea, <sup>2</sup>Mo-Im Kim Nursing Institute, College of Nursing, Yonsei University, South Korea, <sup>3</sup>Graduate School of Public Health, Yonsei University, South Korea, <sup>4</sup>Graduate School of Public Health, The Catholic University, South Korea, <sup>5</sup>College of Nursing, Chonnam National University, South Korea
- 7020 Adaption and Validation for the COVID-19 Stigma Instrument in Nurses: A Cross-Sectional Survey**  
**Feifei Huang**<sup>1</sup>, Weiti Chen<sup>2</sup>, Meilian Lin<sup>3</sup>, Wenxiu Sun<sup>4</sup>, Lin Zhang<sup>4</sup>  
<sup>1</sup>School of Nursing, Fujian Medical University, China, <sup>2</sup>School of Nursing, University of California Los Angeles, the United States, <sup>3</sup>School of Nursing, Fuqing Health School of Fujian Province, China, <sup>4</sup>Nursing Department, Shanghai Public Health Clinical Center, China
- 7021 Factors That Influence Behavioral Intention of Nursing Staff towards Caring for Patients with COVID-19**  
Theodore Pesiridis<sup>1,2</sup>, Petros Galanis<sup>2</sup>, Eleni Anagnostopoulou<sup>2</sup>, Athena Kalokeirinou<sup>2</sup>, **Panayota Sourtzi**<sup>2</sup>  
<sup>1</sup>Home Nursing, Sotiria Hospital, Greece, <sup>2</sup>Faculty of Nursing, National and Kapodistrian University of Athens, Greece
- 7022 A Psychometric Evaluation of the Vietnamese Version of the Evidence-Based Practice Attitudes and Beliefs Scales**  
**Nguyen Van Giang**, Shu Yuan Lin  
College of Nursing, Kaohsiung Medical University, Taiwan
- 7023 Psychological Impact of the Pandemic COVID-19 on Full-Time Nurses with Part-Time Study**  
**Polly Siu Ling Chan**, Naomi Takemura, Pui Hing Chau, Chia-Chin Lin, Kelvin Wang  
School of Nursing, LKS Faculty of Medicine, The University of Hong Kong, Hong Kong
- 7024 A Randomized Group Antenatal Care Pilot Showed Increased Partner Communication and Partner HIV Testing during Pregnancy in Malawi and Tanzania**  
Dhruvi Patel<sup>1</sup>, **Rohan Jeremiah**<sup>1</sup>, Ellen Chirwa<sup>2</sup>, Esnath Kapito<sup>2</sup>, Xiaohan Mei<sup>3</sup>, Linda McCreary<sup>1</sup>, Li Liu<sup>3</sup>, Kathleen Noor<sup>1</sup>, Crystal Patil<sup>2</sup>  
<sup>1</sup>College of Nursing, University of Illinois at Chicago, the United States, <sup>2</sup>Kamuzu College of Nursing, University of Malawi, Malawi, <sup>3</sup>School of Public Health, University of Illinois Chicago, the United States

## Acknowledgements



### Hong Kong International Nursing Forum *cum* 3<sup>rd</sup> Sigma Asia Region Conference

Nursing's Evolving Roles in Transforming Global Health:  
Challenges and Opportunities

December 7 – 8, 2020

## ACKNOWLEDGEMENT WITH GRATITUDE TO THE CONTINUING SUPPORT OF THE FOLLOWING SPONSORS:

Johnson & Johnson (Hong Kong) Ltd.

Eisai (HK) Co. Ltd.

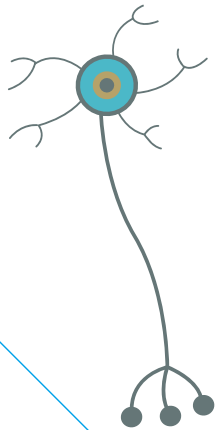
Elsevier (Singapore) Pte Ltd.

Goodwin Health Care Ltd.

MGI (Far East) Ltd.

# LET THE NERVES

# RECONNECT



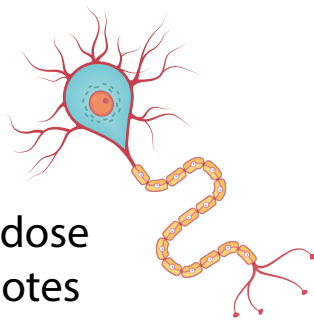
## PROVEN EFFICACY IN PERIPHERAL NEUROPATHIES

induced by a wide range  
of conditions  
(e.g. diabetic neuropathy  
and polyneuritis)<sup>1,2</sup>

# B<sub>12</sub>

## THE ONLY ACTIVE FORM OF VITAMIN B<sub>12</sub>

crossing the blood brain  
barrier for protection  
against excitoxins<sup>1,3</sup>



## High dose promotes AXONAL REGENERATION<sup>1,2,4</sup>



#### References

1. Methycobal® Tablets Package Insert. 2. Head KA. Altern Med Rev. 2006;11:294-329. 3. Gupta JK, Sana QS. Austin J Pharmacol Ther 2015;3:1076. 4. Watanabe T, Kaji R, Oka N, et al. J Neurol Sci 1994;122:140-143. 5. Methycobal® Injection Package Insert.

#### Methycobal drug information

**Composition:** Each tablet contains 500µg of mecobalamin. Each 1 ml ampoule contains 500µg of mecobalamin. **Indications:** Peripheral neuropathies. Megaloblastic anemia due to Vitamin B12 deficiency (inj. only) **Dosage and administration:** Tablet: Usually for adults, orally administer 1 tablets 3 times a day (1,500µg of mecobalamin). The dosage should be adjusted according to the age of the patient and severity of symptoms. Injection: Peripheral neuropathies - the usual adult dosage in 1 ampoule, equivalent to 500µg of mecobalamin, administered intramuscularly or intravenously three times a week. The dosage should be adjusted according to the age of the patient and severity of symptoms. Megaloblastic anemia - the usual adult dosage is 1 ampoule, equivalent to 500µg of mecobalamin, administered intramuscularly or intravenously three times a week After about 2 months of administration one ampoule should be administered every one to three months as maintenance therapy. **Precaution:** Tablet: (1) General - the medicine should not be used aimlessly for more than one month unless it is effective. (2) Adverse reactions - anorexia, nausea, diarrhea or other symptoms of gastrointestinal upsets may infrequently appear. Skin rash is rare. Injection: (1) Adverse reactions a) Hypersensitivity - use of drug should be discontinued if symptoms of hypersensitivity, such as rash occurs. b) Other- infrequently, pain and induration at the site of injection and, rare headache, sweating or fever may occur. (2) Precautions in handling a) Since this drug decomposes on exposure to light, it should be used immediately after the package is opened. b) In intramuscular administration, care should be exercised, as suggested below, to avoid adverse effects on tissues or nerves. (i) Avoid repeated injection at the same site (ii) Exercise care when administering the drug to neonates, premature infants, infants and children (iii) If the patient complains of pain or if blood reflux occurs when the syringe is stuck, withdraw it immediately and try at a different site c) The Methycobal injection is one-point-cut type ampoule. It is recommended that the cut point of the ampoule should be wiped clean with an alcohol swab. **Storage and Handling:** Tablet: This medicine is unstable to light It should be stored protected from light. Injection: Methycobal injections are packed with LPE (Light-Protect-Easy Open) package for the convenience of users and protection of the environment from discarded materials. The package should only be opened immediately before use, because the liquid in the ampoule is sensitive to light. This package can be incinerated when discarded.





Complete **Anatomy** 2021  
The world's most advanced 3D anatomy atlas

**3D4MEDICAL**

from **ELSEVIER**

www.3D4Medical.com

# The world's best-selling and most advanced 3D anatomy platform

Complete Anatomy is the award-winning interactive anatomy platform from 3D4Medical, containing a beautifully rendered 3D human model featuring over 17,000 selectable parts in high resolution.

Validated by its Academic Advisory Board and in-house anatomical experts, this is the most accurate and complex 3D anatomical atlas on the market.



“

The graphic design and detailed anatomical structures in Complete Anatomy are outstanding, and the ability to personalise learning content and the excellent user experience are unlike anything else I have encountered.

”

Dr. Jochen Bretschneider  
VU University Medical Centre, Amsterdam



**Apple Design Award  
Winner**

## Contact us with

Karen Lai: K.Lai@elsevier.com  
Tel: 852-29651323

## The world's most advanced anatomy platform includes:

- The **most accurate and complete** human anatomy models, with over 17,000 interactive structures
- A living, **beating, dissectable** 3D human **heart**
- Over **1,500 clinical video animations** on Cardiology, Orthopedics, Ophthalmology, Dentistry and Fitness
- Real time **Muscle Movement**, Insertion & Origin Mapping, Bony Surface & **Landmark Mapping**, **12 layered systems**, Nerve Tracer and Blood Supply Tracer
- 15 detailed **Microanatomy Models**
- **Creative tools** including **AR mode**, **virtual dissection**, **cross-sections**, 3D pen, fracture, pain and growth simulation
- **Model customization** with custom labels, pen tool and image import
- **Over 100 hours of Lectures**, delivered by leading experts in Human Anatomy, Point of Care Ultrasound, Cadaveric Imagery, Clinical Correlates and more
- **Educator tools** with Drag & Drop Curriculum, lecture recording & student dashboard.

All on a **single, app-based platform**

## Available Now

iPad

Mac

Windows



Android

iPhone







嘉榮醫療有限公司  
GOODWIN health care Ltd.

Tel: 2408 8838 Fax: 2408 1329  
Email: hksales@goodwin.com.hk  
Website: www.goodwin.com.hk



**gig XR**  
HoloPatient



**AR Simulation**

**Gaumard**  
Simulators for Health Care Education

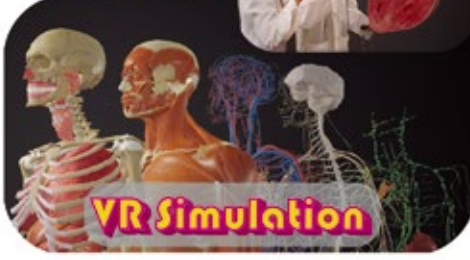


**HAL® S3201**  
Advanced Multipurpose  
Patient Simulator

**MEDICFX**  
Highly Realistic Silicone  
Manikin Face Overlays

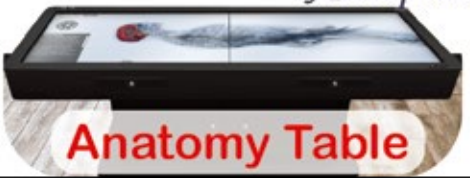


**MAI**  
BodyMap



**VR Simulation**

*Asclepius*



**Anatomy Table**

**SmartMan**  
MORE SURVIVORS



**High Fidelity Megacode Manikin**  
\* Follows AHA Megacode protocol  
\* Real air flow rate measurement  
\* Real time feedback or debrief later

**BODY INTERACT™** Clinical Scenarios -  
CLINICAL EDUCATION A New Learning  
Paradigm with Virtual Patients



**MGI**

**MEDICAL & LABORATORY**  
Specialist Since 1987

Design and Build O.T.Suites & Special Medical Rooms  
Hermetic Doors & Special Hospital Access Solutions  
Medical Pendant Systems & O.T. Equipment  
Medical & Laboratory Gas Pipeline Systems  
Mortuary Equipment & Body Storage  
Laboratory Systems & Fitting  
Website: www.mgi.com.hk

MGI (Far East) Limited  
100-10-11, 11/F, Goodwin Industrial Centre  
1 Sai Wo Road, Tseung Kwan O, Hong Kong  
Tel: (852) 2408 8838 Fax: (852) 2408 1329  
Email: mgi@mgiltd.com.hk



# Master of Science in NURSING (Pre-registration) 2021/2022



**HKU Med** LKS Faculty of Medicine  
School of Nursing  
香港大學護理學院



**T**he Master of Science in Nursing (Pre-registration) [MSN] Programme\* provides a comprehensive and holistic nursing education to bachelor's degree holders from non-nursing disciplines who desire to pursue a promising career as a Registered Nurse with a master degree.

## Features

- ▶ **Integrated curriculum:** to develop your capacity to become a transformative nurse, making a positive impact on the outcomes of patients and healthcare systems, with the capacity to become a future leader in the profession.
- ▶ **Clinical practicum:** to enable you to apply theoretical concepts in practical situations and to practice your nursing care and skills under the instructions and supervision of experienced mentors in all aspects of nursing.
- ▶ **Capstone experience:** to nurture you as a competent learner who are able to formulate meaningful research questions, critically appraise literature and rigorously plan for an appropriate research design.
- ▶ **Innovative teaching strategies:** to meet the need of diverse learners via incorporation of simulation-based learning, interdisciplinary learning, computer-assisted learning and problem-based learning to the curriculum.

## Period of Study

Full-time (9 semesters spread across 3 academic years)

## Programme Structure

The curriculum consists a total of 29 courses which focuses on quality care, clinical skills, leadership and is designed to be both research-intensive and research-informed.

### Taught courses

- Life Sciences I, II for Nursing
- Applied Psychology for Nursing Practice
- Fundamentals of Nursing
- Science of Therapeutic Nursing I, II, III, IV
- Introduction to Nursing Research
- Microbiology and Pharmacology for Nursing Practice
- Health Assessment
- Promoting the Health of Individuals and Populations
- Emergency and Critical Care Nursing
- Mental Health Nursing
- Social Context of Health and Illness
- Nursing Care of Children and Adolescents
- Nursing Care of Women and Infants
- Community and Global Health Nursing
- Nursing Care of the Older Adult
- Professional, Legal and Ethical Issues in Nursing
- Introduction to Chinese Medicine and Nursing
- Management and Leadership

### Clinical Practicum

- Introduction to Clinical Nursing Practicum
- Adult Nursing Practicum
- Specialty Nursing Practicum I, II
- Consolidation Practicum

### Capstone Experience

- Translational Nursing Research
- Dissertation

## Professional Recognition & Career Prospect

- ▶ Graduates will be awarded the master degree in nursing.
- ▶ Graduate will be eligible for applying registration as a Registered Nurse from the Nursing Council of Hong Kong.
- ▶ Graduates with cumulative clinical experiences will subsequently lead to career promotion as advanced practice nurses, nurse consultants, nurse managers or educators.

## Information Seminars

Identical information seminars will be conducted from October 2020 to March 2021. Details will be announced in our website.

Register now



## Application Deadlines

There are two rounds of application, i.e. February 2021 and April 2021. In view of limited quota, early application is strongly recommended. Please refer to our website for application details.

\* Subject to the approval of The University and Nursing Council of Hong Kong.

## ENQUIRY

**School of Nursing**  
LKS Faculty of Medicine  
The University of Hong Kong  
4/F, William MW Mong Block  
21 Sassoon Road, Pokfulam, Hong Kong

(852) 3917 6964

(852) 2872 6079

msc.nursing@hku.hk

https://nursing.hku.hk/



# MSN





## Master of Nursing Full-time (1 year) / Part-time (2 years)

ADVANCE YOUR NURSING CAREER TO HIGHERS LEVELS

### UGC Targeted TPg Fellowships

HKU MNurs is the only higher degree nursing programme awarded with the University Grants Committee (UGC) Taught Postgraduate Programme (TPg) Fellowships. The 30 MNurs fellowship local students 2021/22 will only be required to pay a tuition fee of HK\$42,100 (subject to a subsidy cap of HK\$120,000) for the whole course of study.



### Programme Highlights



- ▣ Specially designed to prepare registered nurses for advanced practice nursing.
- ▣ Various clinical, community and management related study tracks are offered to align with global trend of nursing specialisation.
- ▣ Strongly focused on translational nursing research and evidence-based practice.

### Study Tracks

- ▣ Advanced Surgical Nursing
- ▣ Community and Public Health Nursing
- ▣ Critical Care Nursing
- ▣ Gerontology Nursing
- ▣ Health Care Management and Leadership
- ▣ Infection Control Nursing\*
- ▣ Paediatric Nursing\*
- ▣ Perfusion Science\*

*\*Offered to part-time students only*

#### Programme Details

<https://nursing.hku.hk/education/master-of-nursing-programme>



#### Information Seminars

[https://hku.au1.qualtrics.com/jfe/form/SV\\_6kUU6yB4pJlsmR](https://hku.au1.qualtrics.com/jfe/form/SV_6kUU6yB4pJlsmR)



### Application Deadlines

**1<sup>st</sup> round: 12:00nn (HKT), February 26, 2021**

**2<sup>nd</sup> round: 12:00nn (HKT), April 16, 2021**

Tel: 3917 6651

Website: <https://nursing.hku.hk/>

Email: [mnurs@hku.hk](mailto:mnurs@hku.hk)

Address: 4/F, William M.W. Mong Block, 21 Sassoon Road, Pokfulam, Hong Kong





**HKU  
Med**

LKS Faculty of Medicine  
School of Nursing  
香港大學護理學院

# Doctor of NURSING Programme

**Doctor of Nursing Programme (DNurs)** is designed for nurses who aspire to provide leadership in advancing nursing practice, education and research.

## Duration:

4 years (part-time mode) / 3 years (full-time mode)

## Strengths:

- Close links with a range of health care settings in Hong Kong
- A strong network with first class university schools of nursing internationally

## Highlights:

- 2 leadership tracks -- Educational Leadership Track & Clinical Leadership Track – tailor to students with different professional needs
- International exchange and conference support
- Scholarships



## Information Seminar

2<sup>nd</sup> session: January 5, 2021 (Tuesday)

3<sup>rd</sup> session: February 25, 2021 (Thursday)

4<sup>th</sup> session: March 31, 2021 (Wednesday)

[https://hku.au1.qualtrics.com/jfe/form/SV\\_aXYGepKnEZxczR3](https://hku.au1.qualtrics.com/jfe/form/SV_aXYGepKnEZxczR3)



## Programme Details

<https://nursing.hku.hk/education/doctor-of-nursing-programme>



## Application Deadlines

1<sup>st</sup> Round: 12:00nn (HKT), February 26, 2021

2<sup>nd</sup> Round: 12:00nn (HKT), April 16, 2021